



REPUBLIKA E KOSOVËS/REPUBLIKA KOSOVA/ REPUBLIC OF KOSOVA

Ministria e Arsimit, e Shkencës dhe e Teknologjisë
Ministarstvo Obrazovanja, Nauke i Tehnologije
Ministry of Education, Science and Technology

Data on Education

Statistical Notes 2014/15



Pre-university Education

Number of students and educational personnel in Kosova

Students in pre-university education

Total students 388.351 (M 201.785 & F 186.566)
 Preschool 5.370 (M. 2.790 & F. 2.580)
 Pre-primary 20.875 (M. 10.739 & F. 10.136)
 Primary/low.sec. 275.887(M. 142.460 & F. 133.427)
 Higher secondary 86.219 (M. 45.796 & F. 40.423)

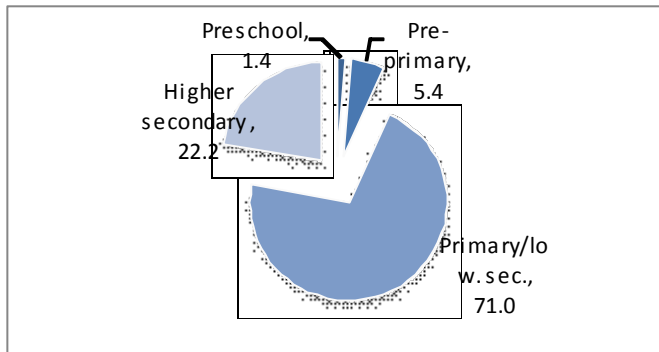


Chart 1. Number of students by level

Number of students by ethnic origin

Albanian	372.794
Bosnian	4.351
Roma	1.918
Egyptian	772
Ashkali	4.177
Turks	2.850
Goran	676
Croatian	31
Serbs	622*
Others	160

*only from few schools of Kamenica

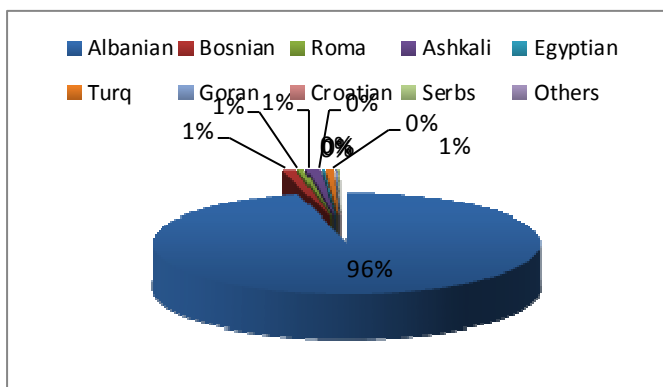


Chart 2. Number of students by ethnic origin

Students in gymnasiums and vocational schools

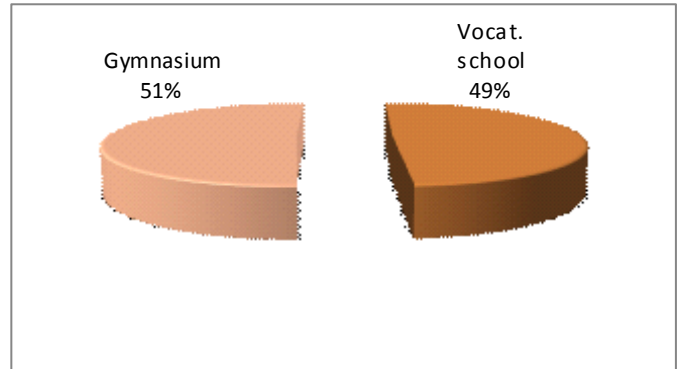


Chart 3. Students by school type

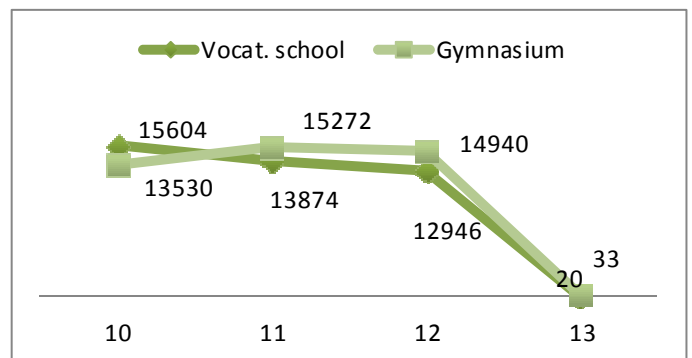


Chart 4. Represents the number of students according to classes in gymnasiums and vocat. schools*

*13th grade is in Serbian language schools

Educational personnel

Total personnel.....28.199 (M. 15.613 & F. 12.586)

- ◆ Teachers.....23.480 (M. 11.734 & F. 11.746)
- ◆ Admin personnel.....1.639 (M. 1.213 & F. 426)
- ◆ Assisting personnel..3.080 (M. 2.666 & F. 414)

Preschool799 (M. 85 & F. 714)

- Teachers528 (M. 2 & F. 526)
- Admin personnel96 (M. 16 & F. 80)
- Assisting personnel.....175 (M. 67 & F. 108)

Primary/lower second..21.182 (M. 11.527 & F. 9.655)

- Teachers.....17.594 (M. 8.455 & F. 9.139)
- Admin personnel1.202 (M. 930 & F. 272)
- Assisting personnel..2.386 (M. 2.142 & F. 244)

Higher Secondary6.218 (M. 4.001& F. 2.217)

- Teachers5.358 (M. 3.277 & F. 2.081)
- Adminis. personnel....341 (M. 267 & F. 74)
- Assisting personnel.....519 (M. 457 & F. 62)

The number of instructive-educational institutions in Kosova

Total:.....1.153 (778 matrix & 375 separate parallels)

Preschool43 (36 matrix & 7 separate parallels)
 Primary school.....985 (633 matrix & 352 separate paral)
 Secondary schoo ..119 (103 matrix & 16 separate paral)
 Special schools6 (6 matrix & 0 separate parallels)

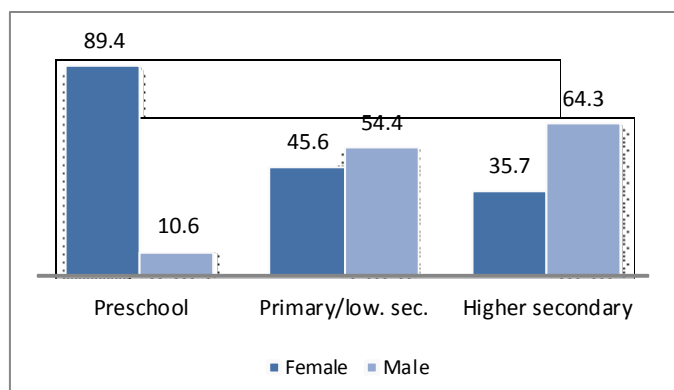


Chart 5. Educational personnel by school levels

Students in Resource Centers / special schools

Total students 455 (M 257 & F 188)

Preschool / pre-primary52 (M. 27 & F. 25)
 Primary/lower secondary.....255 (M. 150 & F. 105)
 Higher second.....138 (M. 80 & F. 58)

Students in private education

Total students 5.031 (M 2.866& F 2.165)

Preschool/pre-primary317 (M. 163 & F. 154)
 Primary/lower second.....2.238 (M. 1.292 & F. 946)
 Higher secondary.....2.476 (M. 1.411 & F. 1.065)

Reports

Report student to teacher and student to parallel

Description	Primary and lower secondary level	Higher secondary level
Report student to teacher	16.4	15.6
Report student to parallel	20.7	26.9