

Ministry of Education, Science and Technology
Education Management Information System

Review on Statistics of Education in Kosovo 2004/05



Prishtina, January 2005

Content:

Introduction	4
1. Kosovo and its population	5
2. Education System in Kosovo	6
2.1. Structure of Education System	6
3. Organising of education program in Kosovo	7
4. Public preschool education	7
4.1. Network of preschool institutions	7
4.2. Children according to nationality background in preschool education (Kindergarten)	9
4.3. Number of groups and children in pre-primary	10
4.4. Children according to nationality background in pre-primary education	11
4.5. Number of groups and children in preschool and pre-primary	12
4.6. Personnel in preschool institutions	13
5. Primary education and Low Education	14
5.1. Network of primary and Low Secondary schools	15
5.2. Number of primary and Low Secondary schools according to the language	15
5.3. Students in primary and Low Secondary schools	16
5.4. Students according to nationality background in the municipalities	19
5.5. Personnel in primary and Low Secondary Education	21
6. Upper Secondary Education	24
6.1. Network of upper secondary schools	24
6.2. Number of Students in upper secondary schools	26
6.3. Num.of Stud. in upper second.scho. according to class. in Municipalities	27
6.4. Students upper secondary schools according to municipalities	28
6.5. Students according to nationality upper secondary schools	29
6.6. Personnel in upper secondary schools	30
6.7. Relationship between Students /teacher	31
7. Special Education	33
7.1. Network of schools in Special Education	33
7.2. Students in special education	33
7.3. Personnel in special education	35
8. Private education	36
8.1. Network of schools	36
8.2. Students in private education	37
8.3. Educational Personnel	39
Annex	
Students according to gender in municipalities	41
Students according to gender and age groups	42
Students according gender and levels	43
Educational Personnel	44
Central and satellite school	45
Special education	46
Private Education	47

Preface

Since the application of reforms, recent years, in Kosovo Education system is required to provide as much as more data and information about organisational education system and ways of its function.

This publication is the first one by MEST, which presents in a summary way the data of Kosovo education. Through this publication the possibility is made in order to compare the particular indicators of Kosovo education with those of other countries structuring in accordance with International Standards Classification of Education (ISCED-97) approved by general conference of UNESKO.

Preparation of this publication is based on take information from the administrative officers in the regions supported by the Directors of schools and municipal directors.

Accurate information and their introduction on time are considered significant elements on implementing of the reforms and education development of Kosovo education.

We hope that the diversity and complementary elements that this publication contains will rouse interest expected to debate and implement effective policy in function of providing quality in education.

In view of limited competences MEST possess towards learning Serbian language, there is a lack of education data in this language.

Education statistics publication 2004-05 is a product of unit Education Management Information System (EMIS).

Prishtina, January 2005

EMIS Unit
Enver Mekolli
Shqipe Bruqi
Hazbije Lahu

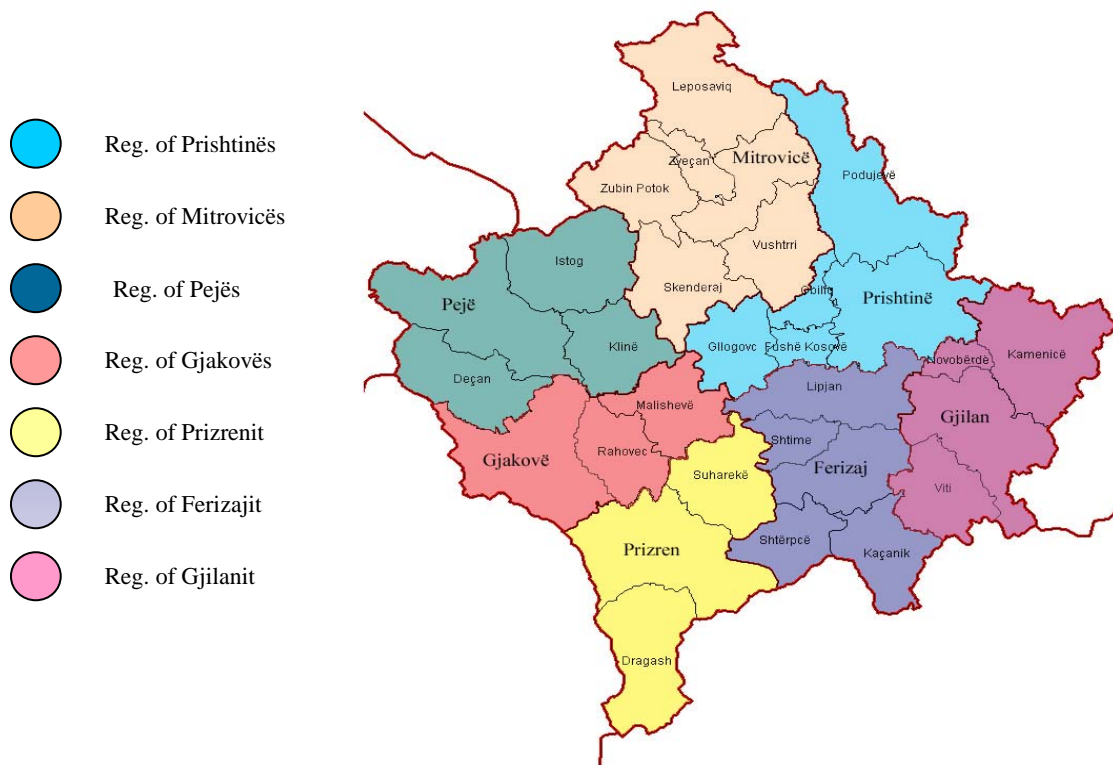
1. Kosovo and its population

Kosovo is a country about 10.887 km². It is in the centre of Balkan Peninsula with average elevation 500m. It is bordered on with Albania, Macedonia, Serbia and Monte Negro.

According to the statistic organ of Kosovo it is assessed that in Kosovo reside 1.8 – 2.2 million inhabitants where 60 % of them are under the age 25.

Kosovo is a complex geographical area where it is assessed that 90 % of Kosovo population is comprised by Albanians, 7 % Serbian whereas 3 % Montenegrin, Bosnian, Turkish, Ashkali, Roma and other ethnic group (minorities)

Kosovo is organised in 7 regions with 30 municipalities, with 1500 dwelling-places and its capital Prishtina.

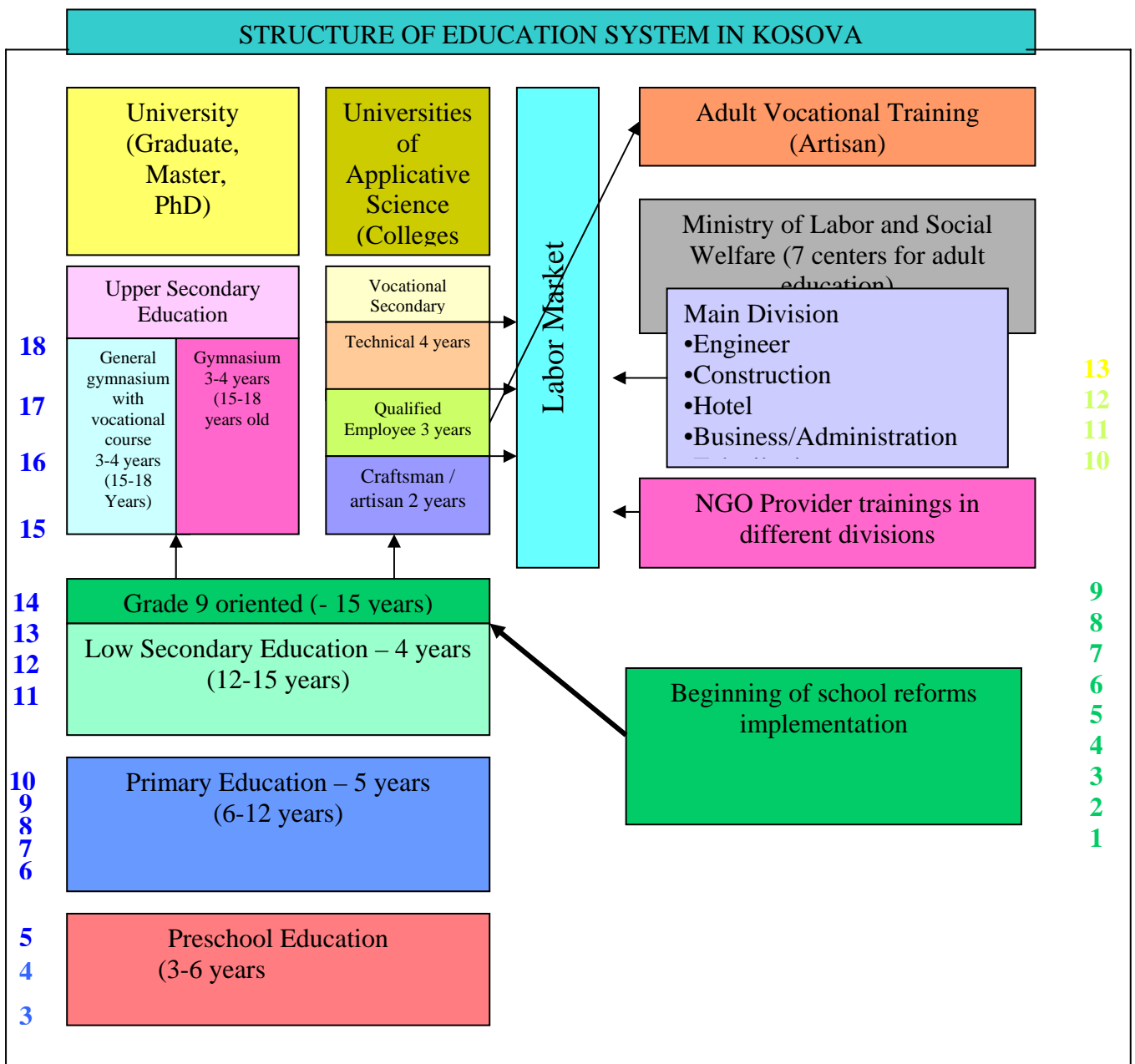


Map 1. Map of Kosova according to regions

2. Education System in Kosovo

2.1. Structure of education system

Since 2002 MEST established a new structure of education. This structure indicates the organisational system of education that is as in the following: preschool education, from 9 months until 6 years, compulsory education that is organized in 5 academic years primary education and 4 academic years Low Secondary education, as well Upper Secondary education that last 3 respectively 4 academic years.



Scheme 1. Structure of Education System

3. Organisation of education program in Kosovo

Program of preschool, primary and secondary education in Kosovo is organised according to the below levels of International Standards Classification Education, 1997 (ISCED- 97).

- a) Level 0: Preschool education (normally the ages from 3 to 6 years old).
- b) Level 1: Primary education (first phase of basic education) for 5 years (normally the ages from 6 to 12 years old).
- c) Level 2: Low Secondary education (second phase of basic education) for 4 years (normally the ages from 12 to 15 years old; and
- d) Level 3: Upper Secondary education for 3 or 4 years, due to educational programs set by MEST (normally the ages from 15 to 18 years).

4. Public preschool education

Preschool education includes children from 9 months to 6 years old.

In Kosovo the preschool education is divided into:

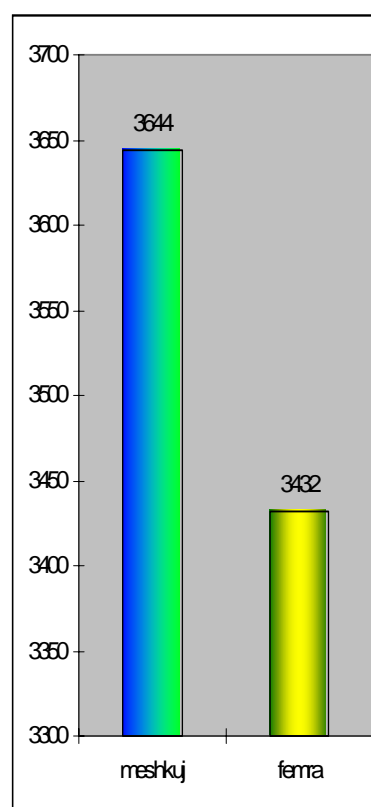
- Kindergarten that include children from the age 9 months to 5 years and
- Pre-primary that includes children from the age 5 to 6 years old.

4.1. Network in preschool institutions

In Kosovo, in the academic school year 2004/05 the total is 32 preschool institutions. 28 from them are major institutions, and 4 divided classrooms. In few municipalities in the lack of facilities, a number of children who belong to the group ages 3-6 years old are in the facilities of primary schools. In the Chart 4.1.1 we will present the number of preschool institutions and children according to municipalities.

Chart 4.1.1 Number of institutions and children in kindergarten

No.	Municipality	No. of inst.	No. of children			% Female
			Total	Male	Female	
1	Prishtina	3	1542	893	649	42.09
2	Podujevë	1	62	30	32	51.61
3	Glllogoc	2	132	69	63	47.73
4	F. Kosovë	1	149	78	71	47.65
5	Obiliq	1	70	33	37	52.86
6	Mitrovicë	1	296	0	296	100.00
7	Skenderaj	1	62	30	32	51.61
8	Vushtrri	1	169	89	80	47.34
9	Z. Potok	0	0	0	0	0
10	Leposaviq	0	0	0	0	0
11	Zveçan	0	0	0	0	0
12	Pejë	3	309	141	168	54.37
13	Istog	4	191	116	75	39.27
14	Klinë	1	40	25	15	37.50
15	Deçan	0	0	0	0	0
16	Gjakovë	2	680	359	321	47.21
17	Rahovec	1	865	424	441	50.98
18	Malishevë	0	1174	611	563	47.96
19	Prizren	1	220	124	96	43.64
20	Suharekë	1	113	56	57	50.44
21	Dragash	0	0	0	0	0
22	Ferizaj	1	233	133	100	42.92
23	Lipjan	1	71	37	34	0
24	Shtime	0	0	0	0	0
25	Shtërpcë	0	0	0	0	0
26	Kaçanik	1	214	109	105	49.07
27	Gjilan	3	310	178	132	42.58
28	Kamenicë	1	100	65	35	35.00
29	Novobërdë	0	0	0	0	0
30	Viti	1	74	44	30	40.54
Total		32	7076	3644	3432	48.50



Graph. 4.1.1 Gender Structure in kindergarten

From the Chart 4.1.1 it can be ascertained that in 2004/05 are in total 32 preschool institution with total 7076 children, where 3432 of them (48.50 %) are female whereas 3644 (51.50 %) are male. It means that the percentage of female participation is lesser in municipalities that have preschool institutions are in the municipality of Kamenica.

4.2. Children according to nationality in preschool education (kindergarten)

Chart.4.2.1. Children according to nationality in preschool education (kindergarten)

No.	Municipality	Children according to nationality								Total
		Albanian	Bosnian	Ashkali	Roma	Croatian	Turkish	Goran	Other	
1	Prishtinë	1521	5	0	0	2	8	2	4	1542
2	Podujevë	62	0	0	0	0	0	0	0	62
3	Glllogoc	132	0	0	0	0	0	0	0	132
4	F. Kosovë	149	0	0	0	0	0	0	0	149
5	Obiliq	70	0	0	0	0	0	0	0	70
6	Mitrovicë	290	6	0	0	0	0	0	0	296
7	Skenderaj	62	0	0	0	0	0	0	0	62
8	Vushtrri	169	0	0	0	0	0	0	0	169
9	Z. Potok	0	0	0	0	0	0	0	0	0
10	Leposaviq	0	0	0	0	0	0	0	0	0
11	Zveçan	0	0	0	0	0	0	0	0	0
12	Pejë	306	2	0	1	0	0	0	0	309
13	Istog	191	0	0	0	0	0	0	0	191
14	Klinë	40	0	0	0	0	0	0	0	40
15	Deçan	0	0	0	0	0	0	0	0	0
16	Gjakovë	656	0	24	0	0	0	0	0	680
17	Rahovec	859	0	5	1	0	0	0	0	865
18	Malishevë	1174	0	0	0	0	0	0	0	1174
19	Prizren	206	6	0	0	0	8	0	0	220
20	Suharekë	113	0	0	0	0	0	0	0	113
21	Dragash	0	0	0	0	0	0	0	0	0
22	Ferizaj	233	0	0	0	0	0	0	0	233
23	Lipjan	71	0	0	0	0	0	0	0	71
24	Shtime	0	0	0	0	0	0	0	0	0
25	Shtërpcë	0	0	0	0	0	0	0	0	0
26	Kaçanik	214	0	0	0	0	0	0	0	214
27	Gjilan	310	0	0	0	0	0	0	0	310
28	Kamenicë	100	0	0	0	0	0	0	0	100
29	Novobërdë	0	0	0	0	0	0	0	0	0
30	Viti	74	0	0	0	0	0	0	0	74
Total		7002	19	29	2	2	16	2	4	7076

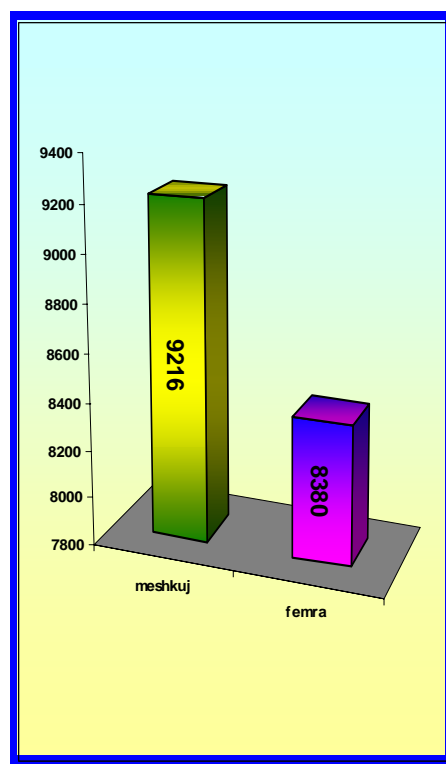
In Chart 4.2.1 is shown the national structure of children included in preschool education (kindergarten) according to municipalities where is seen although small number, however they are from all ethnic groups.

4.3. The number of groups and children in preschool

There is not any special facility for pre-primary education, but these grades function within kindergarten or in the primary school facilities. The purpose of the pre-primary education is the preparation of children to continue the primary school.

Tab.4.3.1 Number of groups and children in pre- primary

No.	Municipality	No. of groups	No. of children			no. child/groups
			total	male	female	
1	Prishtinë	40	1338	726	612	33
2	Podujevë	32	749	406	343	23
3	Glllogoc	23	556	305	251	24
4	F. Kosovë	3	83	50	33	28
5	Obiliq	15	266	136	130	18
6	Mitrovicë	16	541	303	238	34
7	Skenderaj	27	649	331	318	24
8	Vushtrri	8	219	118	101	27
9	Z. Potok	2	22	10	12	11
10	Leposaviq	0	0	0	0	0
11	Zveçan	0	0	0	0	0
12	Pejë	31	854	479	375	28
13	Istog	14	381	158	223	27
14	Klinë	16	437	225	212	27
15	Deçan	23	534	271	263	23
16	Gjakovë	44	948	468	480	22
17	Rahovec	31	846	416	430	27
18	Malishevë	44	1461	821	640	33
19	Prizren	31	1022	519	503	33
20	Suharekë	32	830	430	400	26
21	Dragash	22	431	230	201	20
22	Ferizaj	50	1488	765	723	30
23	Lipjan	32	699	401	298	22
24	Shtime	19	380	201	179	20
25	Shtërpçë	3	41	19	22	14
26	Kaçanik	22	433	212	221	20
27	Gjilan	48	1364	667	697	28
28	Kamenicë	21	326	185	141	16
29	Novobërdë	0	0	0	0	0
30	Viti	24	698	364	334	29
Total		673	17596	9216	8380	26



Graph. 4.2.1 Gender structure of pre-primary

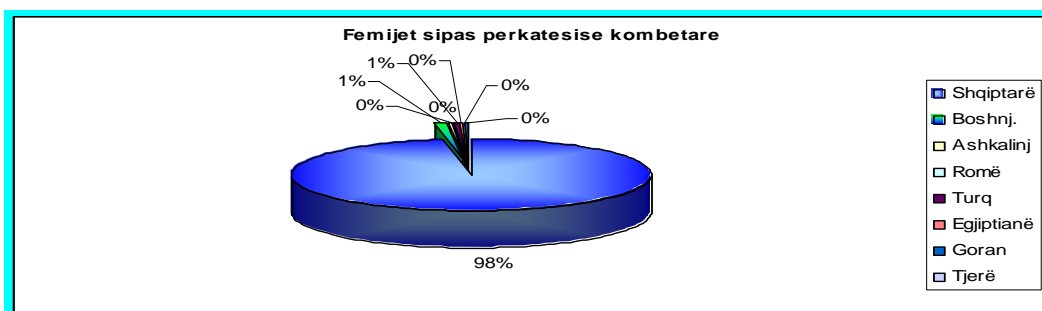
From the tab.4.3.1 we can find that in the school level 2004/05; there are 673 groups with 17596 pre-primary children. The number of children per group in Kosovo is 26.

4.4. Children according to the nationality in pre-primary education

Tab.4.4.1

No.	Municipality	Children according to the nationality								Total
		Albanian	Bosnian	Ashkali	Roma	Turkish	Egyptian	Gorani	Other	
1	Prishtinë	1316	0	0	0	22	0	0	0	1338
2	Podujevë	749								749
3	Glogoc	556								556
4	F. Kosovë	83								83
5	Obiliq	265		1						266
6	Mitrovicë	537	2	2						541
7	Skenderaj	649								649
8	Vushtrri	219								219
9	Z. Potok	22								22
10	Leposaviq	0								0
11	Zveçan	0								0
12	Pejë	818	20		13				3	854
13	Istog	378		1			2			381
14	Klinë	431		6						437
15	Deçan	531		3						534
16	Gjakovë	904	1	6	9		28			948
17	Rahovec	840		5	1					846
18	Malishevë	1461								1461
19	Prizren	859	82			81				1022
20	Suharekë	816		12	2					830
21	Dragash	301	80					50		431
22	Ferizaj	1488								1488
23	Lipjan	699								699
24	Shtime	378		2						380
25	Shtërpçë	41								41
26	Kaçanik	432	1							433
27	Gjilan	1362				2				1364
28	Kamenicë	326								326
29	Novobërdë	0								0
30	Viti	698								698
	Gjithsej	17159	186	38	25	105	30	50	3	17596

Figure data in the tab.4.4.1 show the participation of children in the pre-primary education according to the nationality (Ethnic groups).



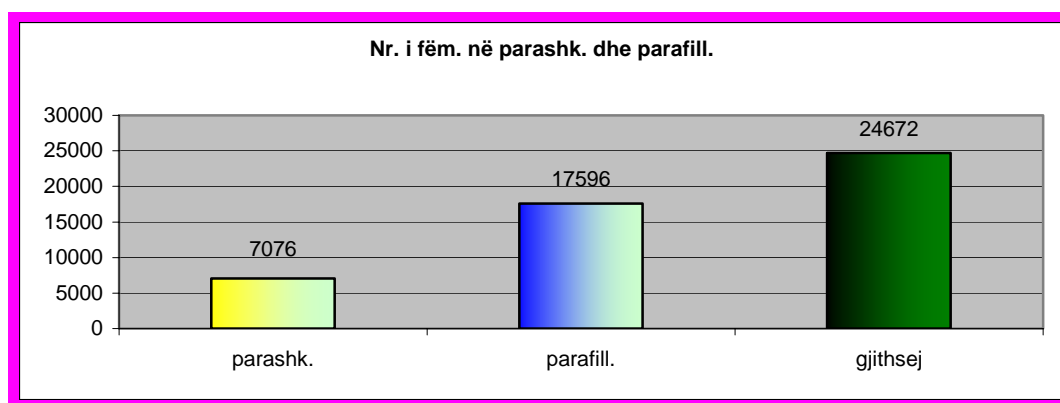
Graph. 4.4.1 Children according to the nationality (ethnic groups)

4.5. The number groups and children in preschool and pre-primary education

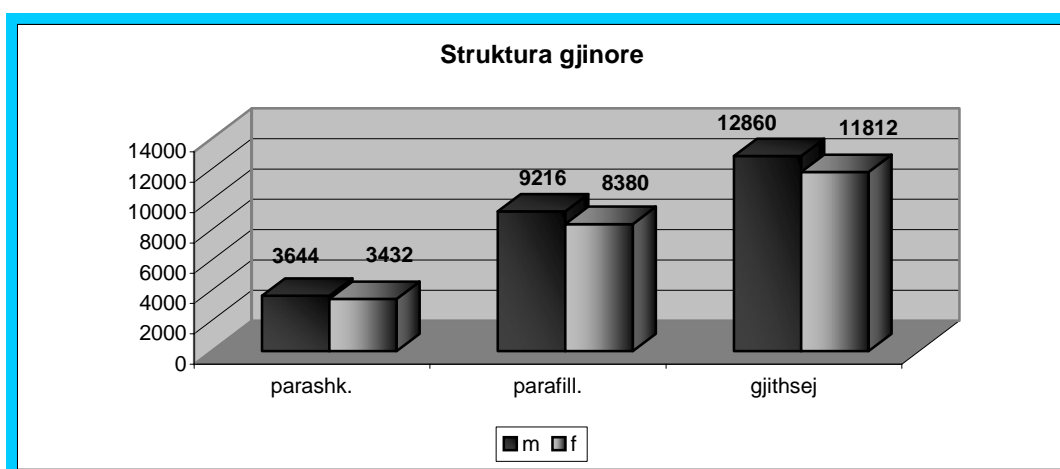
Total number of children in pre-school and pre-primary education is 24672 of them 12860(52.2%) are males, whereas 11812 (47.8%) are females.

Tab.4.5.1 Number of groups and children in preschool and pre-primary education

Group age	No. of groups	No. of children			% female
		Total	male	female	
<-1 year	14	108	54	54	50
1-<2 year	42	514	282	232	45.14
2-<3 year	49	818	429	389	47.56
3-<4 year	48	997	504	493	49.45
4-<5 year	51	1217	596	621	51.03
5 to 6 year	154	3422	1779	1643	48.01
5- 6 year (preprimary)	673	17596	9216	8380	47.62
Total	1031	24672	12860	11812	47.88



Graph. 4.5.1. Number of children in preschool and pre-primary education



Graph 4.5.2 Gender structure of children in preschool and pre-primary education

4.6. Personnel in the preschool institutions

In the academic year 2004/05 the whole personnel in preschool education are 1018, and 573 (56%) of them are teachers, 123 (12%) administrative personnel, and assistant personnel 322 (32%).

Tab. 4.6.1 The educational personnel in the preschool institutions

No.	Municipality	Personnel Total		Teachers		Pers. admin.		Pers. assistants	
		Total	Females	Total	Female	Total	Females	Total	Female
1	Prishtinë	262	231	163	163	15	14	84	54
2	Podujevë	14	11	2	2	6	6	6	3
3	Gllugoc	33	21	15	15	4	1	14	5
4	F. Kosovë	26	23	16	16	2	2	8	5
5	Obiliq	12	12	8	8	2	2	2	2
6	Mitrovicë	45	39	30	30	5	1	10	8
7	Skenderaj	12	8	5	5	2	1	5	2
8	Vushtrri	30	26	16	16	3	3	11	7
9	Z. Potok	0	0	0	0	0	0	0	0
10	Leposaviq	0	0	0	0	0	0	0	0
11	Zveçan	0	0	0	0	0	0	0	0
12	Pejë	53	48	37	37	2	2	14	9
13	Istog	11	8	5	5	2	1	4	2
14	Klinë	11	8	4	4	2	1	5	3
15	Deçan	0	0	0	0	0	0	0	0
16	Gjakovë	148	128	86	86	14	6	48	36
17	Rahovec	32	31	28	28	1	1	3	2
18	Malishevë	136	38	46	38	44	0	46	0
19	Prizren	37	30	25	25	2	1	10	4
20	Suharekë	11	8	5	5	2	1	4	2
21	Dragash	0	0	0	0	0	0	0	0
22	Ferizaj	38	33	23	23	3	2	12	8
23	Lipjan	14	9	6	6	2	0	6	3
24	Shtime	0	0	0	0	0	0	0	0
25	Shtërpcë	0	0	0	0	0	0	0	0
26	Kaçanik	12	10	8	8	1	1	3	1
27	Gjilan	50	44	29	29	4	3	17	12
28	Kamenicë	16	14	9	9	2	2	5	3
29	Novobërdë	0	0	0	0	0	0	0	0
30	Viti	15	11	7	7	3	1	5	3
Total		1018	791	573	565	123	52	322	174

5. Primary and Low Secondary Education

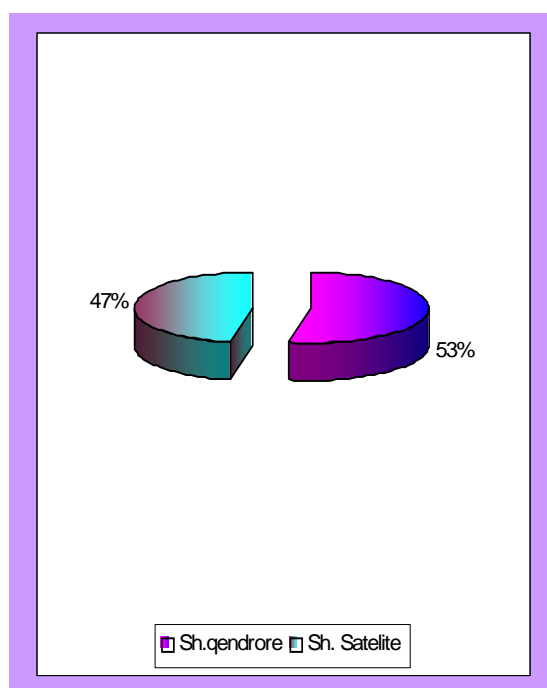
Primary and Low Secondary Education is compulsory education, and it means that all children and youths in Kosovo should have the equal opportunity to be educated. This education is developed according to the model 5+4 years, and it is applicable from the academic year 2004/2005.

5.1. The network of primary and Low Secondary Education

In Kosovo in the academic year 2004/05 the total number of primary schools is 944, where 500 of them are central schools and 444 are satellite (separate parallel)

Tab. 5.1.1 The number of primary schools and Low secondary schools

No.	Municipality	Total Schools	Central Schools	Satellite Schools
1	Prishtinë	60	37	23
2	Podujevë	62	31	31
3	Glogoc	30	22	8
4	F. Kosovë	14	7	7
5	Obiliq	16	5	11
6	Mitrovicë	40	27	13
7	Skenderaj	39	19	20
8	Vushtrri	40	20	20
9	Z. Potok	1	1	0
10	Leposaviq	1	1	0
11	Zveçan	2	1	1
12	Pejë	44	28	16
13	Istog	26	12	14
14	Klinë	25	14	11
15	Deçan	22	17	5
16	Gjakovë	49	36	13
17	Rahovec	30	18	12
18	Malishevë	39	22	17
19	Prizren	71	40	31
20	Suharekë	33	20	13
21	Dragash	35	12	23
22	Ferizaj	44	23	21
23	Lipjan	44	16	28
24	Shtime	19	7	12
25	Shtërpçë	8	2	6
26	Kaçanik	35	13	22
27	Gjilan	43	20	23
28	Kamenicë	33	13	20
29	Novobërdë	5	2	3
30	Viti	34	14	20
Total		944	500	444



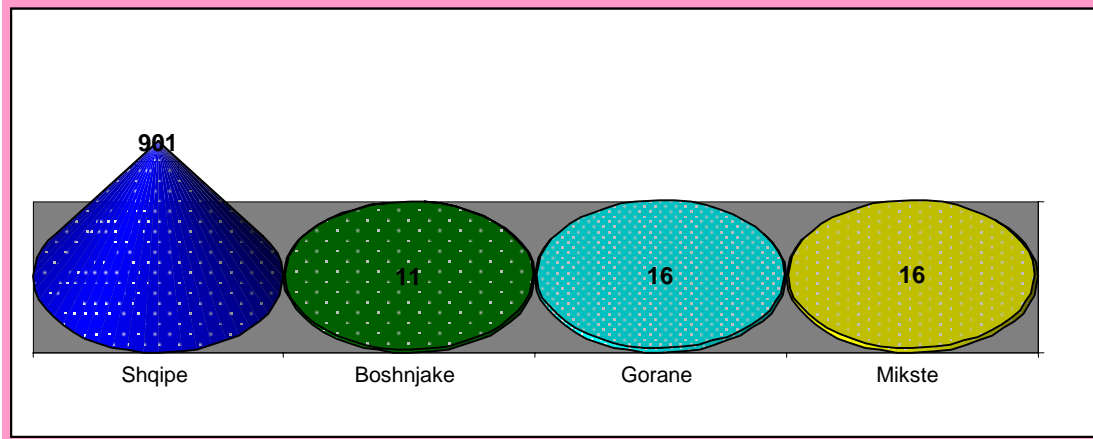
Graph. 5.1.1 Number of central and satellite schools

5.2. Number of primary and Low secondary schools according to the educational languages

Tab.5.2.1. Number of primary and Low secondary school according to the educational languages

No.	Municipality	Total	Albanian	Bosnian.	Gorani	Mixed
1	Prishtinë	60	60	0	0	0
2	Podujevë	62	62	0	0	0
3	Glllogoc	30	30	0	0	0
4	F. Kosovë	14	14	0	0	0
5	Obiliq	16	16	0	0	0
6	Mitrovicë	40	38	0	0	2
7	Skenderaj	39	39	0	0	0
8	Vushtrri	40	40	0	0	0
9	Z. Potok	1	1	0	0	0
10	Leposaviq	1	1	0	0	0
11	Zveçan	2	2	0	0	0
12	Pejë	44	44	0	0	0
13	Istog	26	26	0	0	0
14	Klinë	25	25	0	0	0
15	Deçan	22	22	0	0	0
16	Gjakovë	49	49	0	0	0
17	Rahovec	30	30	0	0	0
18	Malishevë	39	39	0	0	0
19	Prizren	71	48	11	0	12
20	Suharekë	33	33	0	0	0
21	Dragash	35	18	0	16	1
22	Ferizaj	44	44	0	0	0
23	Lipjan	44	43	0	0	1
24	Shtime	19	19	0	0	0
25	Shtërpcë	8	8	0	0	0
26	Kaçanik	35	35	0	0	0
27	Gjilan	43	43	0	0	0
28	Kamenicë	33	33	0	0	0
29	Novobërdë	5	5	0	0	0
30	Viti	34	34	0	0	0
Total		944	901	11	16	16

From the tab. 5.2.1 we can find that from the 944 primary schools 901 are in the Albanian language, 11 in Bosnian languages, 16 in Gorani language and dhe16 mix languages.



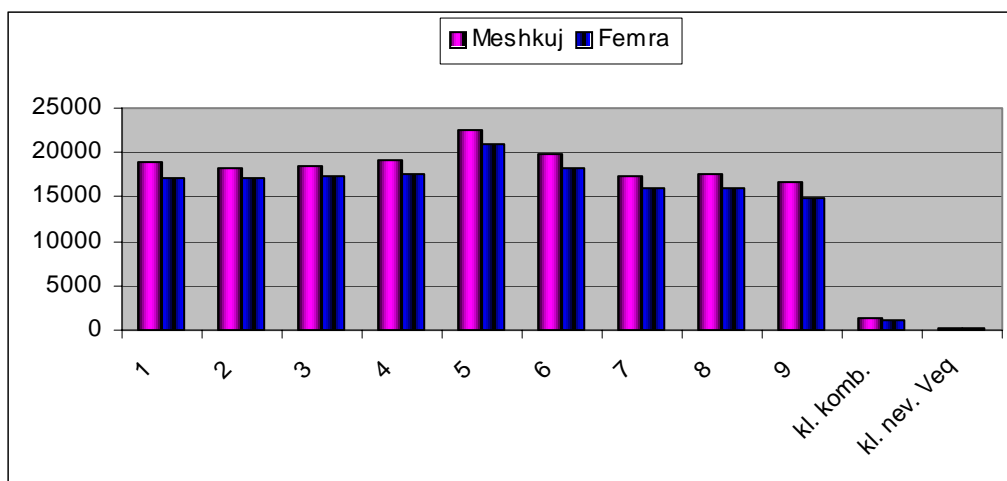
Graph 5.2.1 Number of primary schools/Low secondary schools according to the educational language.

5.3. Students in the primary and Low secondary education

Statistical data of the academic year 2004/05 indicate that this year are enrolled 327.207 students and from this number 170.641 (52.15 %) are males and females whereas 156.566 (47.85 %) are females.

Tab. 5.3.1 The number of students and parallels in the primary and Low secondary education according to the grades.

Grade	Parallel	No. of students			% Female
		Total	Male	Female	
1	1579	36129	19020	17109	47.36
2	1535	35412	18329	17083	48.24
3	1521	35963	18548	17415	48.42
4	1554	36855	19235	17620	47.81
5	1618	43309	22446	20863	48.17
6	1446	38230	19879	18351	48.00
7	1323	33364	17361	16003	47.96
8	1341	33489	17584	15905	47.49
9	1144	31459	16588	14871	47.27
Combined Grade	239	2563	1374	1189	46.39
kl. nev. veq	50	434	277	157	36.18
Total	13350	327207	170641	156566	47.85



Graph 5.3.1 Number of students according to the grades and gender

Tab.5.3.2. Number of students in primary and Low secondary education according to the municipalities

No.	Municipality	Parallel	Number of students			Average of students in parallel
			Total	Male	Female	
1	Prishtinë	1212	32370	16787	15583	26.71
2	Podujevë	749	17206	9028	8178	22.97
3	Glllogoc	451	11550	6009	5541	25.61
4	F. Kosovë	192	5022	2666	2356	26.16
5	Obiliq	171	3281	1650	1631	19.19
6	Mitrovicë	589	13236	6858	6378	22.47
7	Skenderaj	468	11086	5887	5199	23.69
8	Vushtri	562	13775	7252	6523	24.51
9	Z. Potok	13	184	93	91	14.15
10	Leposaviq	7	18	10	8	2.57
11	Zveçan	10	54	31	23	5.40
12	Pejë	711	16995	8890	8105	23.90
13	Istog	326	7858	4137	3721	24.10
14	Klinë	345	8783	4651	4132	25.46
15	Deçan	343	8015	4169	3846	23.37
16	Gjakovë	723	19367	10066	9301	26.79
17	Rahovec	473	11909	6361	5548	25.18
18	Malishevë	560	14306	7507	6799	25.55
19	Prizren	1217	31672	16338	15334	26.02
20	Suharekë	530	13687	7181	6506	25.82

21	Dragash	268	5550	2926	2624	20.71
22	Ferizaj	815	21081	10925	10156	25.87
23	Lipjan	453	10231	5365	4866	22.58
24	Shtime	248	5577	3013	2564	22.49
25	Shtërpçë	36	587	307	280	16.31
26	Kaçanik	357	7999	4141	3858	22.41
27	Gjilan	767	18986	9668	9318	24.75
28	Kamenicë	315	6264	3254	3010	19.89
29	Novobërdë	26	358	191	167	13.77
30	Viti	413	10200	5280	4920	24.70
Gjithsej		13350	327207	170641	156566	24.51

From the tab. 5.3.2 it can be seen that the average of students number per classroom in the primary and Low secondary education in the level of Kosovo is 24.5 students.

Tab. 5.3.3 Number of students according to the municipalities

No.	Municipality	Students according to the classrooms										Class. of special needs	Combined classrooms
		1	2	3	4	5	6	7	8	9			
1	Prishtinë	3757	3625	3672	3616	4168	3582	3453	3252	3240	5	0	
2	Podujevë	2015	1769	1826	1937	2395	1890	1851	1772	1732	19	0	
3	Gllgoc	1202	1229	1177	1178	1630	1312	1276	1303	1231	12	0	
4	F. Kosovë	594	571	571	568	663	598	471	496	485	5	0	
5	Obiliq	379	379	338	388	418	359	382	302	325	11	0	
6	Mitrovicë	1432	1542	1532	1491	1576	1570	1288	1396	1347	8	54	
7	Skenderaj	1290	1207	1256	1247	1412	1365	1035	1143	1008	36	87	
8	Vushtrri	1514	1337	1541	1488	1934	1612	1384	1428	1405	16	116	
9	Z. Potok	15	15	18	19	23	35	18	18	23	0	0	
10	Leposaviq	3	3	0	1	2	6	1	2	0	0	0	
11	Zveçan	9	4	6	6	6	11	6	6	0	0	0	
12	Pejë	1842	1864	1854	1961	2155	2027	1637	1757	1800	31	67	
13	Istog	911	913	889	891	1040	900	861	721	607	25	100	
14	Klinë	973	974	932	1014	1158	1186	813	856	862	15	0	
15	Deçan	881	832	848	844	1099	1137	640	849	861	17	7	
16	Gjakovë	2171	2144	2202	2204	2499	2295	2000	1913	1880	59	0	
17	Rahovec	1273	1363	1425	1440	1517	1492	1097	1164	1079	7	52	
18	Malishevë	1640	1638	1543	1649	1892	1636	1502	1407	1346	17	36	
19	Prizren	3463	3372	3492	3540	4155	3652	3269	3329	2864	20	516	

20	Suharekë	1514	1492	1464	1446	1894	1633	1347	1428	1334	4	131
21	Dragash	531	595	538	857	615	627	597	563	349	4	274
22	Ferizaj	2284	2253	2427	2439	2947	2325	2157	2168	1994	28	59
23	Lipjan	1239	1014	1015	1067	1242	1176	1028	1147	974	7	322
24	Shtime	621	622	620	633	839	700	471	520	494	8	49
25	Shtërpcë	53	72	48	44	75	66	57	59	71	0	42
26	Kaçanik	784	763	868	870	1115	842	889	855	793	13	207
27	Gjilan	1937	2054	2064	2118	2468	2236	2043	1951	1799	40	276
28	Kamenicë	576	600	637	686	925	722	702	657	595	13	151
29	Novobërdë	26	36	27	31	45	37	42	46	51	0	17
30	Viti	1200	1130	1133	1182	1402	1201	1047	981	910	14	0
Total		36129	35412	35963	36855	43309	38230	33364	33489	31459	434	2563

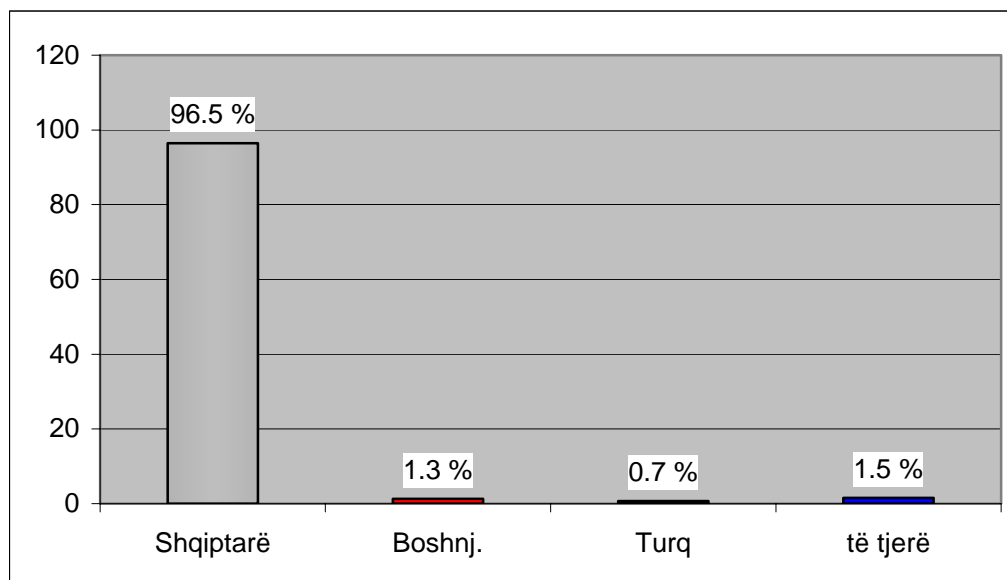
5.4. Students according to the nationality in municipalities

Tab. 5.4.1 Students according to the nationality background

No.	Municipality	Students according to the nationality background									
		Albanian	Bosnian	Ashkali	Roma	Croatian	Turkish	Egyptian	Gorani	Other	Total
1	Prishtinë	32091	21	42	0	0	216	0	0	0	32370
2	Podujevë	17104	0	102	0	0	0	0	0	0	17206
3	Glllogoc	11550	0	0	0	0	0	0	0	0	11550
4	F. Kosovë	4790	3	218	7	0	1	3	0	0	5022
5	Obiliq	3157	0	124	0	0	0	0	0	0	3281
6	Mitrovicë	13099	82	45	0	0	10	0	0	0	13236
7	Skenderaj	11083	0	3	0	0	0	0	0	0	11086
8	Vushtrri	13756	0	18	0	0	0	0	0	1	13775
9	Z. Potok	184	0	0	0	0	0	0	0	0	184
10	Leposaviq	18	0	0	0	0	0	0	0	0	18
11	Zveçan	54	0	0	0	0	0	0	0	0	54
12	Pejë	16030	537	71	194	0	0	163	0	0	16995
13	Istog	7386	152	68	0	0	0	252	0	0	7858
14	Klinë	8518	0	165	99	0	1	0	0	0	8783
15	Deçan	7957	9	37	3	0	0	9	0	0	8015
16	Gjakovë	18446	7	167	325	0	0	422	0	0	19367

17	Rahovec	11866	0	43	0	0	0	0	0	0	11909
18	Malishevë	14306	0	0	0	0	0	0	0	0	14306
19	Prizren	26566	2629	86	330	0	2040	10	11	0	31672
20	Suharekë	13607	0	77	3	0	0	0	0	0	13687
21	Dragash	4021	906	0	0	0	0	0	623	0	5550
22	Ferizaj	20434	0	631	13	0	0	0	2	1	21081
23	Lipjan	9900	6	254	33	38	0	0	0	0	10231
24	Shtime	5496	0	80	1	0	0	0	0	0	5577
25	Shtërpcë	587	0	0	0	0	0	0	0	0	587
26	Kaçanik	7988	11	0	0	0	0	0	0	0	7999
27	Gjilan	18883	0	0	0	0	97	0	6	0	18986
28	Kamenicë	6264	0	0	0	0	0	0	0	0	6264
29	Novobërdë	358	0	0	0	0	0	0	0	0	358
30	Viti	10200	0	0	0	0	0	0	0	0	10200
Total		315699	4363	2231	1008	38	2365	859	642	2	327207

In the tab. 5.4.1 we conclude that the total number in the academic year 2004/05 is 327.207 and of them 315.699 (96.5 %) are Albanian, 4.363 (1.3 %) Bosnian, 2.231 (.07 %) Ashkali, 1.008 (0.3 %) Roma, 38 (0 %) Croatian, 2.365 (0.7 %) Turkish, 859 (0.3 %) Egyptian, 642 (0.2 %) Gorani, and 2 (0 %) others.



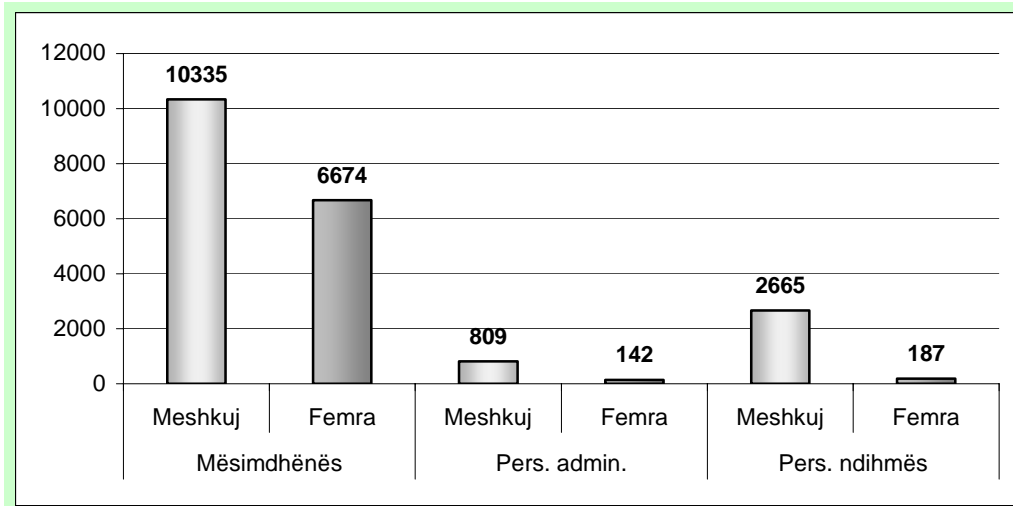
Graph 5.4.1 Students according to the nationality background in the primary and Low secondary education.

5.5. Personnel in the Primary and Low secondary education

The total number of educational personnel in the level of primary and Low secondary education is 20.812. From that number 17.009 (81.7 %) are teachers, 951 (4.6 %) administrative personnel and 2.852 (13.7 %) assistant personnel.

Tab.5.5.1. Personnel in primary and Low secondary education

No.	Municipality	Total Personnel		Teachers		Admin. Pers.		Assistants Pers.	
		Total	Female	Total	Female	Total	Female	Total	Female
1	Prishtinë	1955	1112	1605	1025	76	29	274	58
2	Podujevë	1058	271	889	265	47	6	122	0
3	Glllogoc	739	133	566	127	48	3	125	3
4	F. Kosovë	287	141	239	128	14	8	34	5
5	Obiliq	279	122	238	117	9	2	32	3
6	Mitrovicë	870	398	702	384	49	12	119	2
7	Skenderaj	735	139	589	137	35	1	111	1
8	Vushtrri	841	234	659	229	39	5	143	0
9	Z. Potok	21	8	14	7	2	1	5	0
10	Leposaviq	10	1	8	1	0	0	2	0
11	Zveçan	18	6	11	5	2	1	5	0
12	Pejë	1214	440	858	397	67	13	289	30
13	Istog	447	165	354	158	20	6	73	1
14	Klinë	530	142	440	142	28	0	62	0
15	Deçan	545	168	448	161	30	4	67	3
16	Gjakovë	1173	519	973	481	62	9	138	29
17	Rahovec	760	208	650	206	30	0	80	2
18	Malishevë	792	138	661	138	27	0	104	0
19	Prizren	1874	716	1551	674	90	18	233	24
20	Suharekë	989	322	821	313	50	4	118	5
21	Dragash	491	26	398	22	23	0	70	4
22	Ferizaj	1221	469	1041	461	48	6	132	2
23	Lipjan	697	205	564	198	27	3	106	4
24	Shtime	414	108	334	107	12	1	68	0
25	Shtërpcë	65	11	54	11	2	0	9	0
26	Kaçanik	559	143	471	142	21	1	67	0
27	Gjilan	1104	404	949	395	34	4	121	5
28	Kamenicë	525	106	425	100	23	2	77	4
29	Novobërdë	36	12	25	9	4	1	7	2
30	Viti	563	136	472	134	32	2	59	0
Total		20812	7003	17009	6674	951	142	2852	187



Graph 5.5.1 Educational Personnel according to the gender background

Tab5.5.2 Student/Teacher relationship

No	Municipality	Student	Teacher	Student/teacher relationship
1	Prishtinë	32370	1605	20.17
2	Podujevë	17206	889	19.35
3	Glogoc	11550	566	20.41
4	F. Kosovë	5022	239	21.01
5	Obiliq	3281	238	13.79
6	Mitrovicë	13236	702	18.85
7	Skenderaj	11086	589	18.82
8	Vushtrri	13775	659	20.90
9	Z. Potok	184	14	13.14
10	Leposaviq	18	8	2.25
11	Zveçan	54	11	4.91
12	Pejë	16995	858	19.81
13	Istog	7858	354	22.20
14	Klinë	8783	440	19.96
15	Deçan	8015	448	17.89
16	Gjakovë	19367	973	19.90
17	Rahovec	11909	650	18.32
18	Malishevë	14306	661	21.64
19	Prizren	31672	1551	20.42
20	Suharekë	13687	821	16.67
21	Dragash	5550	398	13.94

22	Ferizaj	21081	1041	20.25
23	Lipjan	10231	564	18.14
24	Shtime	5577	334	16.70
25	Shtërpçë	587	54	10.87
26	Kaçanik	7999	471	16.98
27	Gjilan	18986	949	20.01
28	Kamenicë	6264	425	14.74
29	Novobërdë	358	25	14.32
30	Viti	10200	472	21.61
	Total	327207	17009	19.24

From the tab.5.5.2 it is seen that the average relationship between student/teachers in the academic years 2004/05 is 19.2 students.

6. Upper Secondary Education

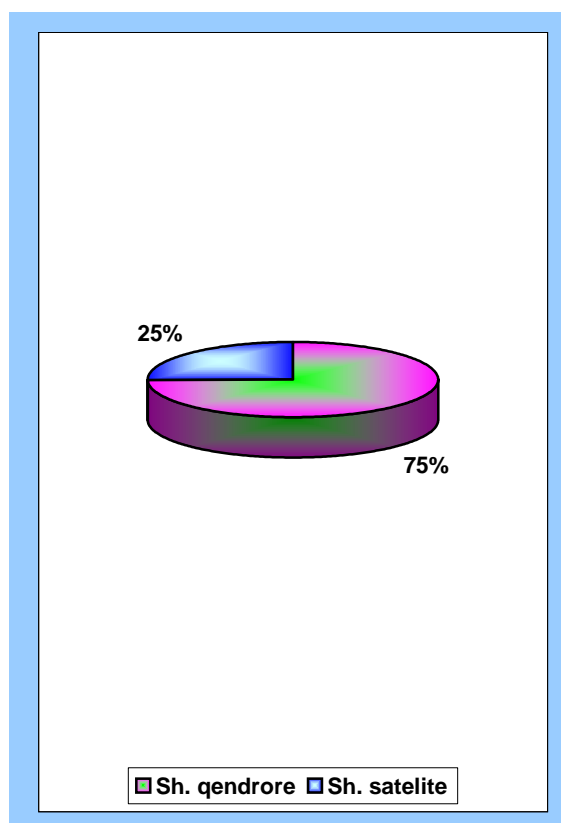
From the academic year 2002/03 in Kosovo is applied a new educational system where the upper secondary education include the age 15 to 18 years old, whose duration is 3 or 4 years of the educational programs determined by MEST.

6.1. The network of upper secondary education

In the academic 2004/05 Kosovo has the total number of upper secondary schools 103, and of them 77 are central school and 26 are satellite (separated parallel).

Tab.6.1.1 Number of Upper Secondary Education

No.	Municipality	Total School	Central School	Satellite School
1	Prishtinë	12	12	0
2	Podujevë	5	3	2
3	Glllogoc	3	2	1
4	F. Kosovë	3	3	0
5	Obiliq	1	1	0
6	Mitrovicë	5	4	1
7	Skenderaj	3	2	1
8	Vushtri	2	2	0
9	Z. Potok	0	0	0
10	Leposaviq	0	0	0
11	Zveçan	0	0	0
12	Pejë	5	5	0
13	Istog	3	2	1
14	Klinë	1	1	0
15	Deçan	4	3	1
16	Gjakovë	8	4	4
17	Rahovec	3	1	2
18	Malishevë	2	2	0
19	Prizren	11	5	6
20	Suharekë	2	2	0
21	Dragash	1	1	0
22	Ferizaj	6	6	0
23	Lipjan	4	2	2
24	Shtime	1	1	0
25	Shtërpcë	1	1	0
26	Kaçanik	3	3	0
27	Gjilan	6	5	1
28	Kamenicë	4	2	2
29	Novobërdë	0	0	0
30	Viti	4	2	2
Total		103	77	26

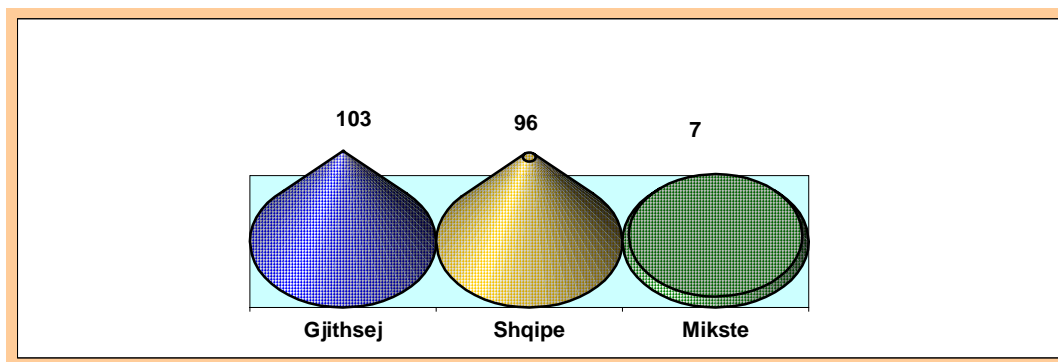


Graph 6.1.1 Number of central and satellite schools

Tab. 6.1.2 Number of Upper secondary schools according to the educational languages

No.	Municipality	Total	Albanian	Mixed
1	Prishtinë	12	12	0
2	Podujevë	5	5	0
3	Glllogoc	3	3	0
4	F. Kosovë	3	3	0
5	Obiliq	1	1	0
6	Mitrovicë	5	3	2
7	Skenderaj	3	3	0
8	Vushtrri	2	2	0
9	Z. Potok	0	0	0
10	Leposaviq	0	0	0
11	Zveçan	0	0	0
12	Pejë	5	5	0
13	Istog	3	3	0
14	Klinë	1	1	0
15	Deçan	4	4	0
16	Gjakovë	8	8	0
17	Rahovec	3	3	0
18	Malishevë	2	2	0
19	Prizren	11	6	5
20	Suharekë	2	2	0
21	Dragash	1	1	0
22	Ferizaj	6	6	0
23	Lipjan	4	4	0
24	Shtime	1	1	0
25	Shtërpcë	1	1	0
26	Kaçanik	3	3	0
27	Gjilan	6	6	0
28	Kamenicë	4	4	0
29	Novobërdë	0	0	0
30	Viti	4	4	0
	Total	103	96	7

From the tab. 6.1.2 is seen that the education in Albanian language is developed in 96 schools whereas 7 other schools are where the education is developed in Albanian, Bosnian, and Turkish languages.



Graph 6.1.1 Number of schools according to the educational languages

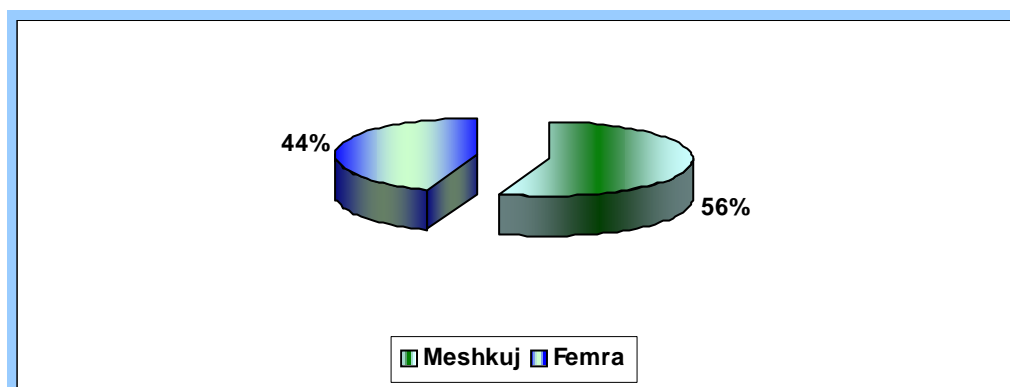
6.2. Number of students in Upper secondary Education

In upper secondary education in this academic year are enrolled 69.760 students, of them 38940 (55.8 %) are males whereas 30.820 (44.2 %) females.

From the total number of students in all educational level 16.54% belong to the Upper secondary education.

Tab.6.2.1. Number of students in Upper secondary education according to the grades (classrooms)

Grade	Parallel	Number of students			% Female
		Total	Male	Female	
10	884	27111	15708	11403	42.1
11	828	23251	12856	10395	44.7
IV	675	19398	10376	9022	46.5
Total	2387	69760	38940	30820	44.2



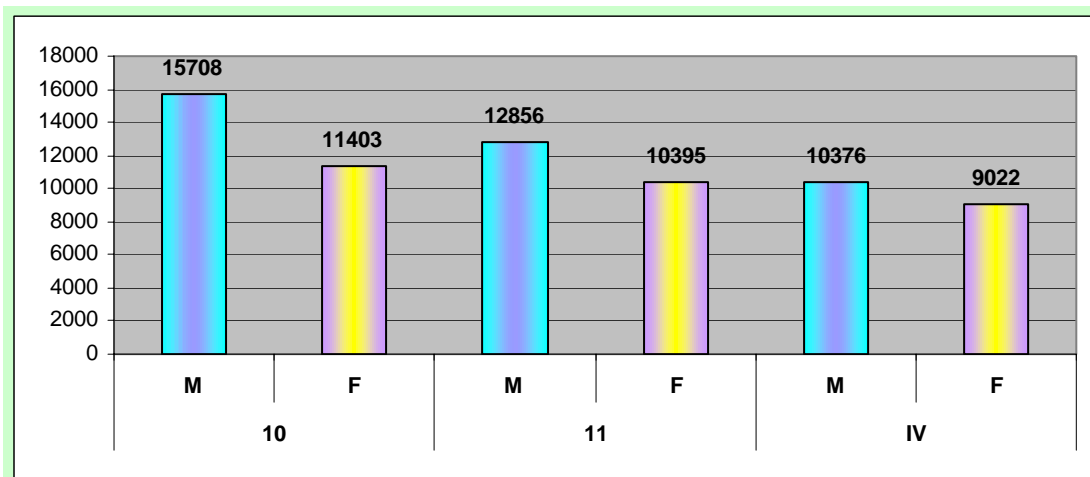
Graph 6.2.1 Gender structure in Upper secondary education

Tab.6.3.1

6.3. Number of students in Upper secondary education according to the grades in municipalities

Nr.	Municipality	10		11		IV		Total	
		M	F	M	F	M	F	M	F
1	Prishtinë	1947	1703	1610	1598	1080	1122	4637	4423
2	Podujevë	810	571	698	596	531	506	2039	1673
3	Glllogoc	686	442	567	511	462	386	1715	1339
4	F. Kosovë	194	181	138	170	164	186	496	537
5	Obiliq	215	105	121	110	113	68	449	283
6	Mitrovicë	869	685	649	497	611	514	2129	1696
7	Skenderaj	559	347	502	340	389	276	1450	963
8	Vushtrri	762	518	559	442	438	337	1759	1297
9	Z. Potok	0	0	0	0	0	0	0	0
10	Leposaviq	0	0	0	0	0	0	0	0
11	Zveçan	0	0	0	0	0	0	0	0

12	Pejë	860	683	725	620	635	594	2220	1897
13	Istog	330	175	254	168	192	181	776	524
14	Klinë	353	172	205	181	192	136	750	489
15	Deçan	428	239	451	200	323	177	1202	616
16	Gjakovë	957	543	794	556	770	490	2521	1589
17	Rahovec	411	245	286	220	267	262	964	727
18	Malishevë	463	323	479	272	359	208	1301	803
19	Prizren	1290	920	904	774	773	697	2967	2391
20	Suharekë	620	359	490	330	397	243	1507	932
21	Dragash	172	60	175	62	100	49	447	171
22	Ferizaj	1051	840	882	783	708	812	2641	2435
23	Lipjan	498	451	453	399	356	290	1307	1140
24	Shtime	241	175	245	160	160	148	646	483
25	Shtërpçë	25	20	28	15	33	17	86	52
26	Kaçanik	339	258	310	199	216	179	865	636
27	Gjilan	934	812	755	663	672	685	2361	2160
28	Kamenicë	264	242	217	218	211	170	692	630
29	Novobërdë	0	0	0	0	0	0	0	0
30	Viti	430	334	359	311	224	289	1013	934
Total		15708	11403	12856	10395	10376	9022	38940	30820



Graph 6 3.1 Gender structure according to the grades (classrooms)

6.4. Students in the Upper secondary education according to municipalities

The average of students per parallel in the Upper secondary education in the level of Kosovo is 29.2 students.

Tab.6.4.1. Number of students, parallels, and the average of students in Upper secondary education according to the municipalities

No.	Municipality	Parallel	Number of students			Average of stud. in paral.
			Total	Males	Females	
1	Prishtinë	301	9060	4637	4423	30.10
2	Podujevë	119	3712	2039	1673	31.19
3	Glllogoc	88	3054	1715	1339	34.70
4	F. Kosovë	36	1033	496	537	28.69
5	Obiliq	29	732	449	283	25.24
6	Mitrovicë	132	3825	2129	1696	28.98
7	Skenderaj	82	2413	1450	963	29.43
8	Vushtrri	100	3056	1759	1297	30.56
9	Z. Potok	0	0	0	0	0.00
10	Leposaviq	0	0	0	0	0.00
11	Zveçan	0	0	0	0	0.00
12	Pejë	178	4117	2220	1897	23.13
13	Istog	51	1300	776	524	25.49
14	Klinë	49	1239	750	489	25.29
15	Deçan	64	1818	1202	616	28.41
16	Gjakovë	134	4110	2521	1589	30.67
17	Rahovec	56	1691	964	727	30.20
18	Malishevë	62	2104	1301	803	33.94
19	Prizren	190	5358	2967	2391	28.20
20	Suharekë	77	2439	1507	932	31.68
21	Dragash	32	618	447	171	19.31
22	Ferizaj	155	5076	2641	2435	32.75
23	Lipjan	80	2447	1307	1140	30.59
24	Shtime	36	1129	646	483	31.36
25	Shtërpçë	6	138	86	52	23.00
26	Kaçanik	50	1501	865	636	30.02
27	Gjilan	158	4521	2361	2160	28.61
28	Kamenicë	50	1322	692	630	26.44
29	Novobërdë	0	0	0	0	0.00
30	Viti	72	1947	1013	934	27.04
Total		2387	69760	38940	30820	29.22

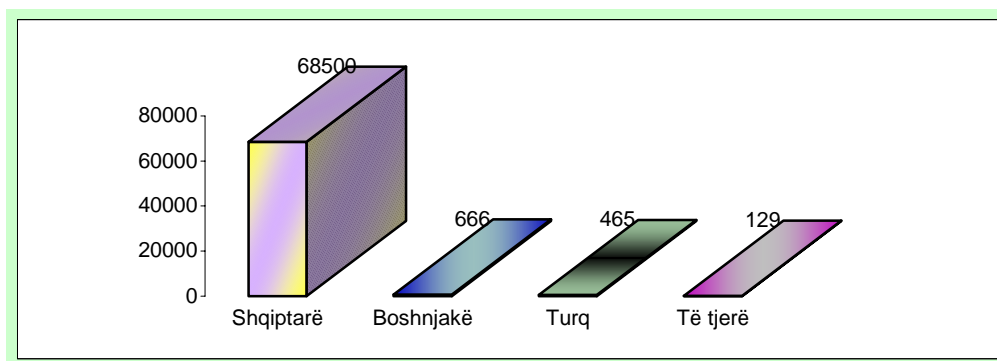
From the tab. 6.4.1 it is obviously seen that the average of students in Upper secondary education is much higher than in primary/Low secondary education where it was 24.5 students.

6.5. Students according to the nationality background in Upper secondary education

Tab. 6.5.1 Students according to the nationality background in Upper secondary education

No.	Municipality	Students according to the nationality background									Total
		Albanian	Bosnian	Ashkali	Roma	Croatian	Turkish	Egyptian	Goran	Other	
1	Prishtinë	9060	0	0	0	0	0	0	0	0	9060
2	Podujevë	3712	0	0	0	0	0	0	0	0	3712
3	Glllogoc	3054	0	0	0	0	0	0	0	0	3054
4	F. Kosovë	1033	0	0	0	0	0	0	0	0	1033
5	Obiliq	732	0	0	0	0	0	0	0	0	732
6	Mitrovicë	3803	18	0	0	0	4	0	0	0	3825
7	Skenderaj	2413	0	0	0	0	0	0	0	0	2413
8	Vushtrri	3056	0	0	0	0	0	0	0	0	3056
9	Z. Potok	0	0	0	0	0	0	0	0	0	0
10	Leposaviq	0	0	0	0	0	0	0	0	0	0
11	Zveçan	0	0	0	0	0	0	0	0	0	0
12	Pejë	3960	150	4	3	0	0	0	0	0	4117
13	Istog	1281	1	18	0	0	0	0	0	0	1300
14	Klinë	1227	0	12	0	0	0	0	0	0	1239
15	Deçan	1816	0	0	2	0	0	0	0	0	1818
16	Gjakovë	4073	3	7	19	0	0	8	0	0	4110
17	Rahovec	1691	0	0	0	0	0	0	0	0	1691
18	Malishevë	2104	0	0	0	0	0	0	0	0	2104
19	Prizren	4461	465	0	8	0	424	0	0	0	5358
20	Suharekë	2439	0	0	0	0	0	0	0	0	2439
21	Dragash	571	29	0	0	0	0	0	18	0	618
22	Ferizaj	5051	0	22	1	0	0	0	1	1	5076
23	Lipjan	2446	0	1	0	0	0	0	0	0	2447
24	Shtime	1125	0	4	0	0	0	0	0	0	1129
25	Shtërpcë	138	0	0	0	0	0	0	0	0	138
26	Kaçanik	1501	0	0	0	0	0	0	0	0	1501
27	Gjilan	4484	0	0	0	0	37	0	0	0	4521
28	Kamenicë	1322	0	0	0	0	0	0	0	0	1322
29	Novobërdë	0	0	0	0	0	0	0	0	0	0
30	Viti	1947	0	0	0	0	0	0	0	0	1947
	Gjithsej	68500	666	68	33	0	465	8	19	1	69760

From the tab. 6.5.1 it is seen that from the total 69.760 students, 68.500 (98 %) are Albanians, 666 (1 %) Bosnian, 465 (1 %) Turkish and 129 (0 %) others.



Graph 6.5.1 Students according to the nationality background

6.6. Personnel in Upper secondary education

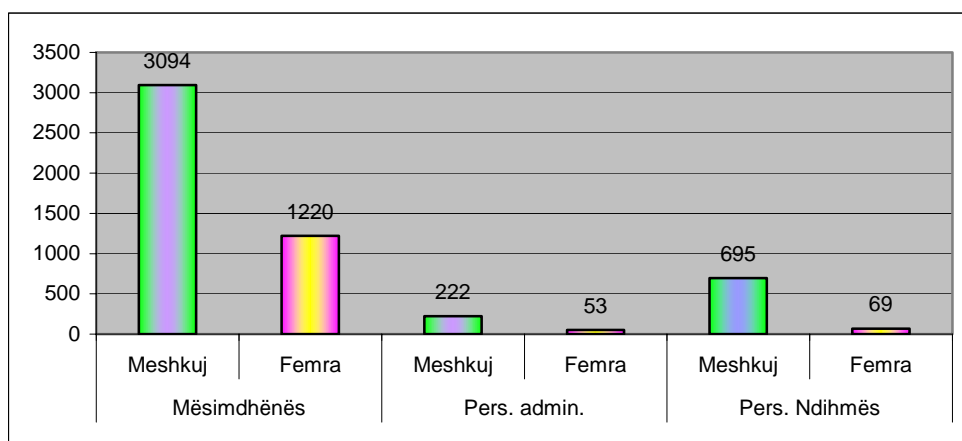
The general number of educational personnel in Upper secondary education for the academic year 2004/05 is 5.353, of them 4.314 (80.6 %) are teachers, 275 (5.1 %) administrative personnel and 764 (14.3 %) assistants personnel.

Tab. 6.6.1 Personnel in Upper secondary education

No.	Municipality	Total Personnel		Teachers		Admin. Pers.		Ass. Pers.	
		Total	Female	Total	Female	Total	Female	Total	Female
1	Prishtinë	595	220	449	200	23	6	123	14
2	Podujevë	238	33	186	27	23	6	29	0
3	Glllogoc	335	37	148	29	51	6	136	2
4	F. Kosovë	73	21	61	20	4	0	8	1
5	Obiliq	64	18	56	17	3	1	5	0
6	Mitrovicë	265	92	220	88	11	2	34	2
7	Skenderaj	204	45	174	43	9	1	21	1
8	Vushtrri	206	40	177	38	8	1	21	1
9	Z. Potok	0	0	0	0	0	0	0	0
10	Leposaviq	0	0	0	0	0	0	0	0
11	Zveçan	0	0	0	0	0	0	0	0
12	Pejë	425	150	352	129	20	8	53	13
13	Istog	135	31	115	27	7	3	13	1
14	Klinë	105	13	87	12	4	1	14	0
15	Deçan	142	24	117	23	7	0	18	1
16	Gjakovë	314	121	272	106	12	3	30	12
17	Rahovec	96	10	82	10	3	0	11	0
18	Malishevë	120	12	100	11	5	1	15	0
19	Prizren	420	107	357	96	18	7	45	4
20	Suharekë	163	43	136	41	7	1	20	1
21	Dragash	73	2	63	1	2	0	8	1
22	Ferizaj	327	100	270	94	13	2	44	4

23	Lipjan	163	43	134	41	8	2	21	0
24	Shtime	71	15	57	15	3	0	11	0
25	Shtërpçë	18	2	15	2	1	0	2	0
26	Kaçanik	119	17	99	17	6	0	14	0
27	Gjilan	373	94	324	88	14	0	35	6
28	Kamenicë	129	12	103	9	7	1	19	2
29	Novobërdë	0	0	0	0	0	0	0	0
30	Viti	180	40	160	36	6	1	14	3
Total		5353	1342	4314	1220	275	53	764	69

Tab. 6.6.1 shows the number of educational personnel according to the municipalities.



Graph. 6.6.1 Educational Personnel according to the gender structure

6.7. Relationship student/teacher

Tab. 6.7.1 Relationship student/teacher

No.	Municipality	Student	Teachers	Student/Teachers Relationship
1	Prishtinë	9060	449	20.2
2	Podujevë	3712	186	20.0
3	Glogoc	3054	148	20.6
4	F. Kosovë	1033	61	16.9
5	Obiliq	732	56	13.1
6	Mitrovicë	3825	220	17.4
7	Skenderaj	2413	174	13.9
8	Vushtrri	3056	177	17.3

9	Z. Potok	0	0	0.0
10	Leposaviq	0	0	0.0
11	Zveçan	0	0	0.0
12	Pejë	4117	352	11.7
13	Istog	1300	115	11.3
14	Klinë	1239	87	14.2
15	Deçan	1818	117	15.5
16	Gjakovë	4110	272	15.1
17	Rahovec	1691	82	20.6
18	Malishevë	2104	100	21.0
19	Prizren	5358	357	15.0
20	Suharekë	2439	136	17.9
21	Dragash	618	63	9.8
22	Ferizaj	5076	270	18.8
23	Lipjan	2447	134	18.3
24	Shtime	1129	57	19.8
25	Shtërpcë	138	15	9.2
26	Kaçanik	1501	99	15.2
27	Gjilan	4521	324	14.0
28	Kamenicë	1322	103	12.8
29	Novobërdë	0	0	0.0
30	Viti	1947	160	12.2
Total		69760	4314	16.2

From the tab. 6.2.2 it is seen that the average of relationship between students and teachers is 16.2

7. Special Education

Based on Law on Primary and Secondary education in Kosovo, the right of special education is an inalienable right. Thus, according to the Law that do not gain or that do not have opportunity to profit ordinary teaching in pleasant way have the right for special education.

In Kosovo the total number is 7 special schools and 60 attached classrooms that mean that in each municipality there is one or more attached classrooms in the regular schools for children with special needs. This number of these classrooms is always increasing

7.1. Network of schools in special education

Tab.7.1.1. Number of schools of special education

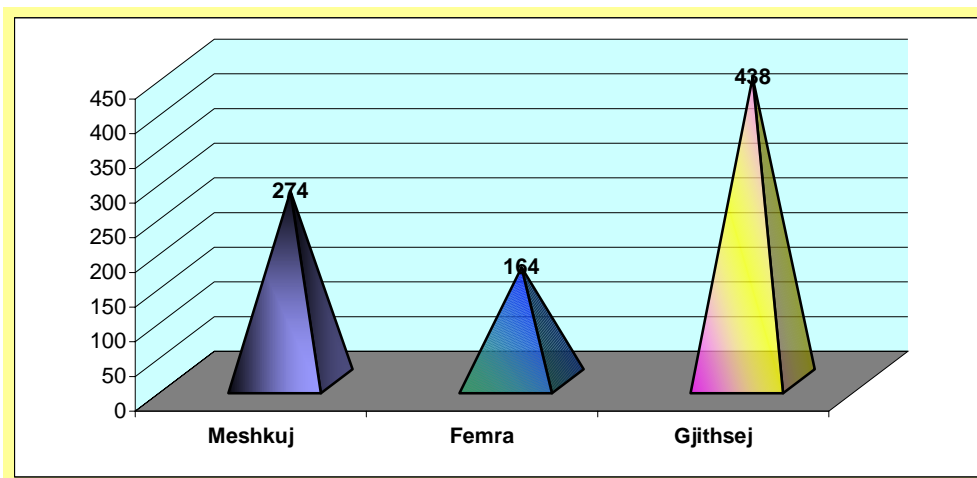
No.	Municipality	Name of schools
1	Mitrovicë	Nënë Tereza
2	Mitrovicë	Special schools (Serbian)
3	Pejë	Special school for blind persons
4	Prishtinë	Përparimi
5	Prizren	Nënë Tereza
6	Prizren	Lef Nosi
7	Shtime	Shpresa

7.2. Students in special education

Tab.7.2.1. Number of parallels and students

No.	Municipality	Parallel	Number of students		
			M	F	GJ
1	Mitrovicë	11	44	28	72
2	Mitrovicë	8	12	20	32
3	Pejë	12	32	17	49
4	Prishtinë	11	46	40	86
5	Prizren	18	78	39	117
6	Prizren	11	61	12	73
7	Shtime	3	1	8	9
Total		74	274	164	438

In the tab. 7.2.1.it is shown the number of parallels and students in the special schools according to gender structure.



Graph. 7.2.1 Gender Structure of students

Tab.7.2.2. Number of students according to the age groups

No.	Age Groups	Total	Males	Females	% Females
1	3 - 4 years	7	4	3	42.9
2	4 - 5 years	0	0	0	0.0
3	5 - 6 years	13	8	5	38.5
4	grade 1	38	27	11	28.9
5	grade 2	43	25	18	41.9
6	grade 3	39	15	24	61.5
7	grade 4	37	26	11	29.7
8	grade 5	51	33	18	35.3
9	grade 6	40	22	18	45.0
10	grade 7	28	20	8	28.6
11	grade 8	27	18	9	33.3
12	grade 9	38	22	16	42.1
13	grade 10	36	26	10	27.8
14	grade 11	38	26	12	31.6
15	grade 12	3	2	1	33.3
Total		438	274	164	37.4

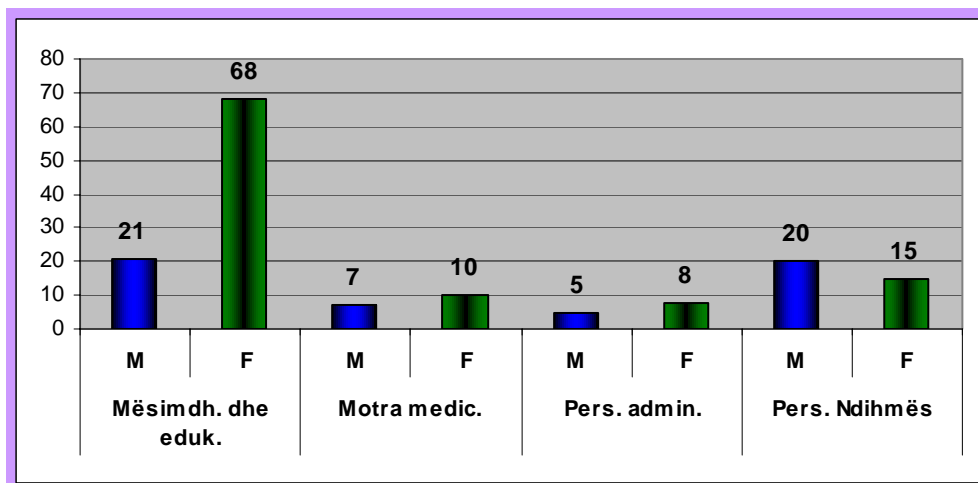
7.3. Personnel in special schools

In the academic years 2004/05 in special education the whole personnel are 154. Of them 89 are teachers and educators, 17 nurses, 13 administrative personnel and 35 assistant personnel.

Tab.7.3.1. Personnel in special education and the relationship student/teacher.

No.	Municipality	Teachers and educators			Nurses			Admin. Pers			Ass. Pers.			Relationship Student/teacher
		M	F	GJ	M	F	GJ	M	F	GJ	M	F	GJ	
1	Mitrovicë	1	10	11	1	1	2	2	1	3	4	1	5	6.5
2	Mitrovicë			0			0			0			0	0.0
3	Pejë	8	12	20	2	3	5	0	2	2	3	6	9	2.5
4	Prishtinë	0	11	11	0	0	0	1	1	2	1	1	2	7.8
5	Prizren	10	19	29	2	4	6	0	3	3	7	4	11	4.0
6	Prizren	1	15	16	2	2	4	2	0	2	5	2	7	4.6
7	Shtime	1	1	2	0	0	0	0	1	1	0	1	1	4.5
Total		21	68	89	7	10	17	5	8	13	20	15	35	4.9

In the tab. 7.3.1 it is seen the number of personnel and relationship student/teacher that in Kosovo is 4.9 students per teacher.



Graph 7.3.1 Personnel according gender structure

8. Private Education

In addition of public education in Kosovo there is the private education as well that is developed in all levels of schools.

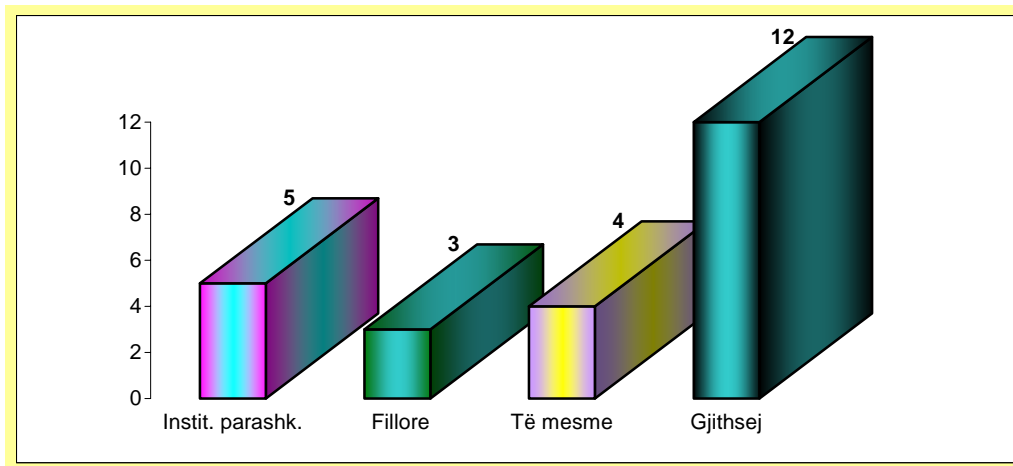
8.1. Network of schools

In Kosovo, in the academic school year 2004/05 are 12 educational institutions, but their number is increasing because of few license requests that are being in the procedure.

Tab.8.1.1 Number of educational institutions

No.	Municipality	Preschool Inst.	Primary school	Secondary school
1	Prishtinë	1	3	3
2	Prizren	4	0	0
3	Ferizaj	0	0	1
Total		5	3	4

In the tab. 8.1.1 it is seen that in Kosovo, actually, there are 5 preschool institutions, 3 primary schools and 4 secondary schools.



Graph 8.1.1 Schools according to the levels

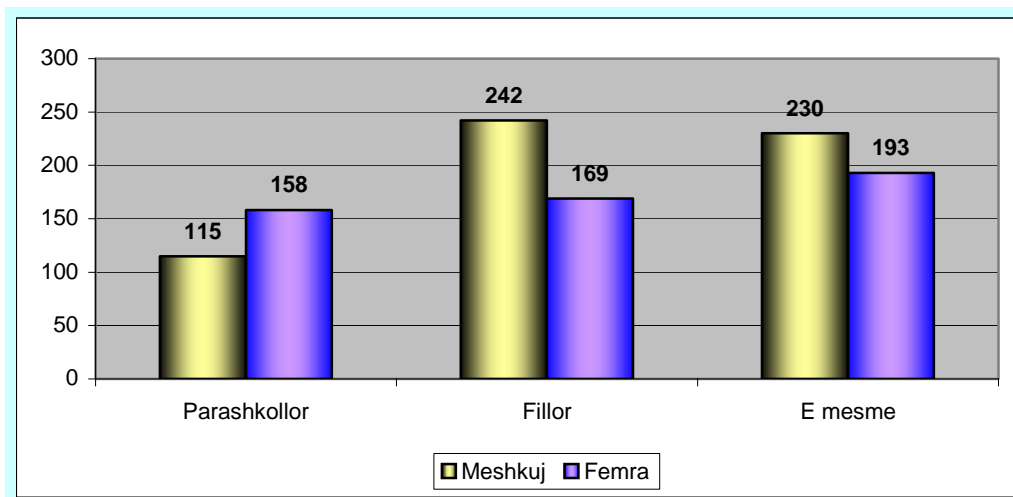
8.2. Students in Private education

In the academic school years 2004/05, 1.107 students are enrolled. Of them in the level of preschool are 273 (24.6 %), in primary 411 (37.1 %) and 423 (38.2 %) in the Upper secondary level.

Tab.8.2.1 Number of parallels and students

No.	Levels	Parallels	Number of students			Student/teacher relationship
			M	F	GJ	
1	Preschool	15	115	158	273	18
2	Primary	25	242	169	411	16
3	Secondary	17	230	193	423	25
Total		57	587	520	1107	19

From the tab. 8.2.1 is seen that the participation of females in private education in the level of Kosovo is 47 % whereas of males is 53 %, while the relationship between student per parallel is 19.



Graph 8.2.1 Gender Structure in school level

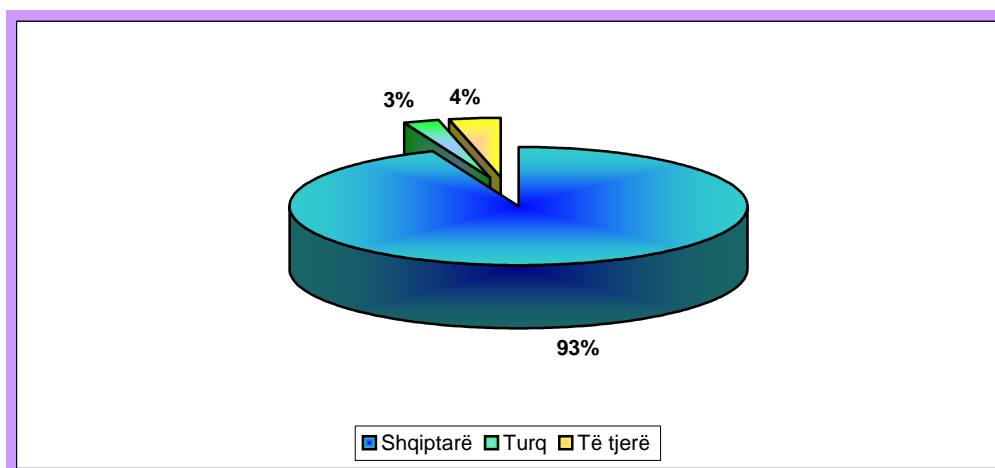
Tab. 8.2.2 Number of students according to the age groups and grades.

No.	Age groups	Total	Male	Female	% Female
1	3-<4 years	70	34	36	51.4
2	4-<5 years	74	27	47	63.5
3	kind.(5 to 6 years)	129	54	75	58.1
4	Grade 1	73	48	25	34.2
5	grade 2	34	18	16	47.1
6	grade 3	14	9	5	35.7
7	grade 4	11	8	3	27.3
8	grade 5	80	44	36	45.0
9	grade 6	62	37	25	40.3
10	grade 7	37	26	11	29.7
11	grade 8	19	9	10	52.6
12	grade 9	81	43	38	46.9
13	grade 10	162	87	75	46.3
14	grade 11	187	102	85	45.5
15	grade 12	74	41	33	44.6
Total		1107	587	520	47

Tab. 8.2.3 Number of students according to the nationality background

No.	Age groups	Students according to the nationality background						Total
		Albanian	Bosnian	Ashkali	Roma	Turkish	Others	
1	3-<4 years	65	0	1	0	4	0	70
2	4-<5 years	74	0	0	0	0	0	74
3	kind. 5 to <6 years	119	0	0	8	2	0	129
4	grade 1	61	1	0	0	8	3	73
5	grade 2	22	0	0	0	2	10	34
6	grade 3	13	0	0	0	1	0	14
7	grade 4	9	0	0	0	1	1	11
8	grade 5	74	0	0	0	3	3	80
9	grade 6	57	3	0	0	2	0	62
10	grade 7	34	0	0	0	0	3	37
11	grade 8	19	0	0	0	0	0	19
12	grade 9	79	0	0	0	2	0	81
13	grade 10	161	0	0	0	1	0	162
14	grade 11	179	0	0	0	2	6	187
15	grade 12	73	0	0	0	1	0	74
Total		1039	4	1	8	29	26	1107

In the tab. 8.2.3 is seen that in the private education, except Albanian students there are other minorities groups like: Bosnian, Ashkali, Roma, Turkish and others.



Graph. 8.2.2. Students according to the nationality background

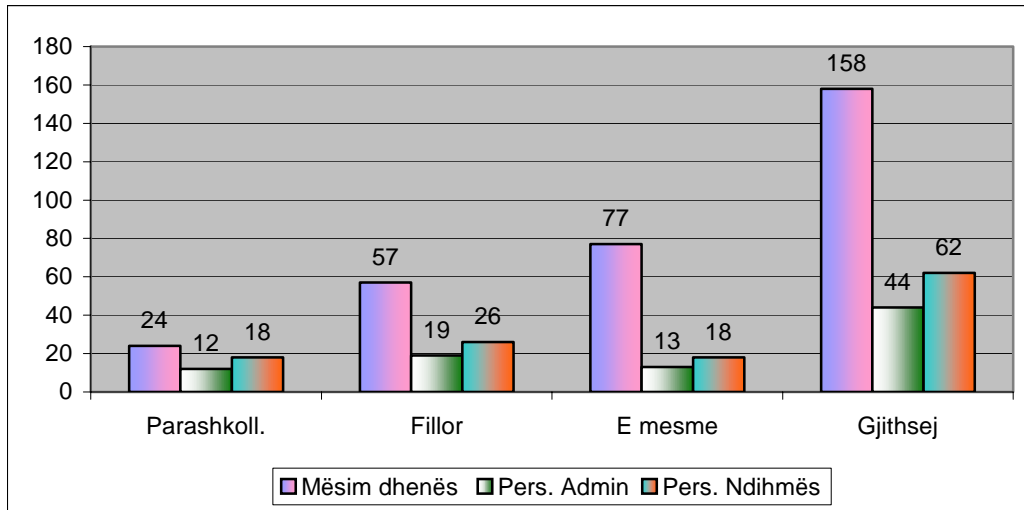
8.3. Educational Personnel

Number of educational personnel in private education, for the academic 2004/2005 is 264, of them 158 (59.8 %) are teachers, 44 (16.7 %) administrative personnel and 62 (23.5 %) assistant personnel.

Tab.8.3.1 Student and educational personnel.

Levels	Number of student			Teachers and Educators			Admin. Pers.			Assistant. Pers.			Student/teacher relationship.
	M	F	T	M	F	T	M	F	T	M	F	T	
Preshool	115	158	273	2	22	24	4	8	12	3	15	18	11.4
Primary	242	169	411	16	41	57	8	11	19	15	11	26	7.2
Secondary	230	193	423	50	27	77	8	5	13	9	9	18	5.5
Total	587	520	1107	68	90	158	20	24	44	27	35	62	7.0

From the tab. 8.3.1 is seen that the average relationship student per teacher is 7.



Graph. 8.3.1. Educational personnel in school levels

Student according to the gender in municipalities

COUNTRY **Kosovo**

Year 04/05

Total	Gender		Percentage of female students
	Male	Female	

Municipalities

	Total	421639	222441	199198	47.24
1	Prishtinë	44310	23043	21267	48.00
2	Podujevë	21729	11503	10226	47.06
3	Glllogoc	15292	8098	7194	47.04
4	F. Kosovë	6287	3290	2997	47.67
5	Obiliq	4349	2268	2081	47.85
6	Mitrovicë	17898	9290	8608	48.09
7	Skenderaj	14210	7698	6512	45.83
8	Vushtrri	17219	9218	8001	46.47
9	Z. Potok	206	103	103	50.00
10	Leposaviq	18	10	8	44.44
11	Zveçan	54	31	23	42.59
12	Pejë	22275	11730	10545	47.34
13	Istog	9730	5187	4543	46.69
14	Klinë	10499	5651	4848	46.18
15	Deçan	10367	5642	4725	45.58
16	Gjakovë	25105	13414	11691	46.57
17	Rahovec	15311	8165	7146	46.67
18	Malishevë	19045	10240	8805	46.23
19	Prizren	38272	19948	18324	47.88
20	Suharekë	17069	9174	7895	46.25
21	Dragash	6599	3603	2996	45.40
22	Ferizaj	27878	14464	13414	48.12
23	Lipjan	13448	7110	6338	47.13
24	Shtime	7086	3860	3226	45.53
25	Shtërpcë	766	412	354	46.21
26	Kaçanik	10147	5327	4820	47.50
27	Gjilan	25181	12874	12307	48.87
28	Kamenicë	8012	4196	3816	47.63
29	Novobërdë	358	191	167	46.65
30	Viti	12919	6701	6218	48.13

Students according to the Age groups

Country **Kosovo**

Year 04/05

Total	Gender		Percentage of female students
	Male	Female	

Age groups	421639	222441	199198	47.2
<-1 year	108	54	54	50.0
1-<2 year	514	282	232	45.1
2-<3 year	818	429	389	47.6
3-<4 year	997	504	493	49.4
4-<5 year	1217	596	621	51.0
Preschooll 5 to <6 year	3422	1779	1643	48.0
Preprimary	17596	9216	8380	47.6
Grade 1	36129	19020	17109	47.4
Grade 2	35412	18329	17083	48.2
Grade 3	35963	18548	17415	48.4
Grade 4	36855	19235	17620	47.8
Grade 5	43309	22446	20863	48.2
Grade 6	38230	19879	18351	48.0
Grade 7	33364	17361	16003	48.0
Grade 8	33489	17584	15905	47.5
Grade 9	31459	16588	14871	47.3
Grade 10	27111	15708	11403	42.1
Grade 11	23251	12856	10395	44.7
Grade 12	19398	10376	9022	46.5
Grad of spec. needs.	434	277	157	36.2
Community grades	2563	1374	1189	46.4

Students according to the gender in levels

Country **Kosovo**

Year 04/05

Total	Gender		% Female
	Male	Female	

ISCED 97

Total	421639	222441	199198	47.2
Total preschool	7076	3644	3432	48.5
Total preprimary	17596	9216	8380	47.6
Total 1 - 9	327207	170641	156566	47.8
Total 10- IV	69760	38940	30820	44.2

0	Total preschool	7076	3644	3432	48.5
	<-1 years	108	54	54	50.0
	1-2 years	514	282	232	45.1
	2-3 years	818	429	389	47.6
	3-4 years	997	504	493	49.4
	4-5 years	1217	596	621	51.0
	5 - 6 years	3422	1779	1643	48.0

0	Total pre-primary.	17596	9216	8380	47.6
	Pre-primary	17596	9216	8380	47.6

1+2	Total 1 to 9	327207	170641	156566	47.8
	Grade 1	36129	19020	17109	47.4
	Grade 2	35412	18329	17083	48.2
	Grade 3	35963	18548	17415	48.4
	Grade 4	36855	19235	17620	47.8
	Grade 5	43309	22446	20863	48.2
	Grade 6	38230	19879	18351	48.0
	Grade 7	33364	17361	16003	48.0
	Grade 8	33489	17584	15905	47.5
	Grade 9	31459	16588	14871	47.3
	Grades of special needs	434	277	157	36.2
	Community grades	2563	1374	1189	46.4

3	Total. 10 - IV	69760	38940	30820	44.2
	Grade 10	27111	15708	11403	42.1
	Grade 11	23251	12856	10395	44.7
	Grade IV	19398	10376	9022	46.5

Educational Personnel year 04/05

COUNTRY **Kosovo**

Academic Year 04/05

Total	Gender	
	Male	Female

Municipalities

	Total	18047	9136
1	Prishtinë	2812	1563
2	Podujevë	1310	315
3	Glllogoc	1107	191
4	F. Kosovë	386	185
5	Obiliq	355	152
6	Mitrovicë	1180	529
7	Skenderaj	951	192
8	Vushtrri	1077	300
9	Z. Potok	21	8
10	Leposaviq	10	1
11	Zveçan	18	6
12	Pejë	1692	638
13	Istog	593	204
14	Klinë	646	163
15	Deçan	687	192
16	Gjakovë	1635	768
17	Rahovec	888	249
18	Malishevë	1048	188
19	Prizren	2331	853
20	Suharekë	1163	373
21	Dragash	564	28
22	Ferizaj	1586	602
23	Lipjan	874	257
24	Shtime	485	123
25	Shtërpçë	83	13
26	Kaçanik	690	170
27	Gjilan	1527	542
28	Kamenicë	670	132
29	Novobërdë	36	12
30	Viti	758	187

Central and Satellite school 04/05

COUNTRY **Kosovo**

Academic Year 04/05

Total	School			
	Preschool inst.	Primary	Secondary	Special

Municipality

	Total	1085	32	944	103	6
1	Prishtinë	76	3	60	12	1
2	Podujevë	68	1	62	5	0
3	Glogoc	35	2	30	3	0
4	F. Kosovë	18	1	14	3	0
5	Obiliq	18	1	16	1	0
	Reg. of Prishtina	215	8	182	24	1
1	Mitrovicë	47	1	40	5	1
2	Skenderaj	43	1	39	3	0
3	Vushtri	43	1	40	2	0
4	Z. Potok	1	0	1	0	0
5	Leposaviq	1	0	1	0	0
6	Zveçan	2	0	2	0	0
	Reg. of Mitrovica	137	3	123	10	1
1	Pejë	53	3	44	5	1
2	Istog	33	4	26	3	0
3	Klinë	27	1	25	1	0
4	Deçan	26	0	22	4	0
	Reg. of Peja	139	8	117	13	1
1	Gjakovë	59	2	49	8	0
2	Rahovec	34	1	30	3	0
3	Malishevë	41	0	39	2	0
	Reg. of Gjakova	134	3	118	13	0
1	Prizren	85	1	71	11	2
2	Suharekë	36	1	33	2	0
3	Dragash	36	0	35	1	0
	Reg. of Prizren	157	2	139	14	2
1	Ferizaj	51	1	44	6	0
2	Lipjan	49	1	44	4	0
3	Shtime	21	0	19	1	1
4	Shtërpçë	9	0	8	1	0
5	Kaçanik	39	1	35	3	0
	Reg. of Ferizaj	169	3	150	15	1
1	Gjilan	52	3	43	6	0
2	Kamenicë	38	1	33	4	0
3	Novobërdë	5	0	5	0	0
4	Viti	39	1	34	4	0
	Reg. of Gjilan	134	5	115	14	0

Special Education

Students according to the age groups

Country **Kosovo**

Academic Year 04/05

Total	Gender		Percentage of female students
	Male	Female	

Age Groups	438	274	164	37.4
<-1 year	0	0	0	0.0
1-2 year	0	0	0	0.0
2-3 year	0	0	0	0.0
3-4 year	7	4	3	42.9
4-5 year	0	0	0	0.0
5-6 year	13	8	5	38.5
Grade 1	38	27	11	28.9
Grade 2	43	25	18	41.9
Grade 3	39	15	24	61.5
Grade 4	37	26	11	29.7
Grade 5	51	33	18	35.3
Grade 6	40	22	18	45.0
Grade 7	28	20	8	28.6
Grade 8	27	18	9	33.3
Grade 9	38	22	16	42.1
Grade 10	36	26	10	27.8
Grade 11	38	26	12	31.6
Grade 12	3	2	1	33.3

Private Education

Students according to the gender and age groups

Country **Kosovo**

Academic Year04/05

Total	Gender		Percentage of female students
	Male	Female	

Age groups	1107	587	520	47.0
<-1 year	0	0	0	0
1-2 year	0	0	0	0
2-3 year	0	0	0	0
3-4 year	70	34	36	51.4
4-5 year	74	27	47	63.5
5-6 year	129	54	75	58.1
grade 1	73	48	25	34.2
grade 2	34	18	16	47.1
grade 3	14	9	5	35.7
grade 4	11	8	3	27.3
grade 5	80	44	36	45.0
grade 6	62	37	25	40.3
grade 7	37	26	11	29.7
grade 8	19	9	10	52.6
grade 9	81	43	38	46.9
grade 10	162	87	75	46.3
grade 11	187	102	85	45.5
grade 12	74	41	33	44.6