



International boarding education for students aged 14+

Coursefinder

2016-17 UK and Europe

Courses and subjects

Term dates

Course fees

Terms and conditions

Application form

Contents

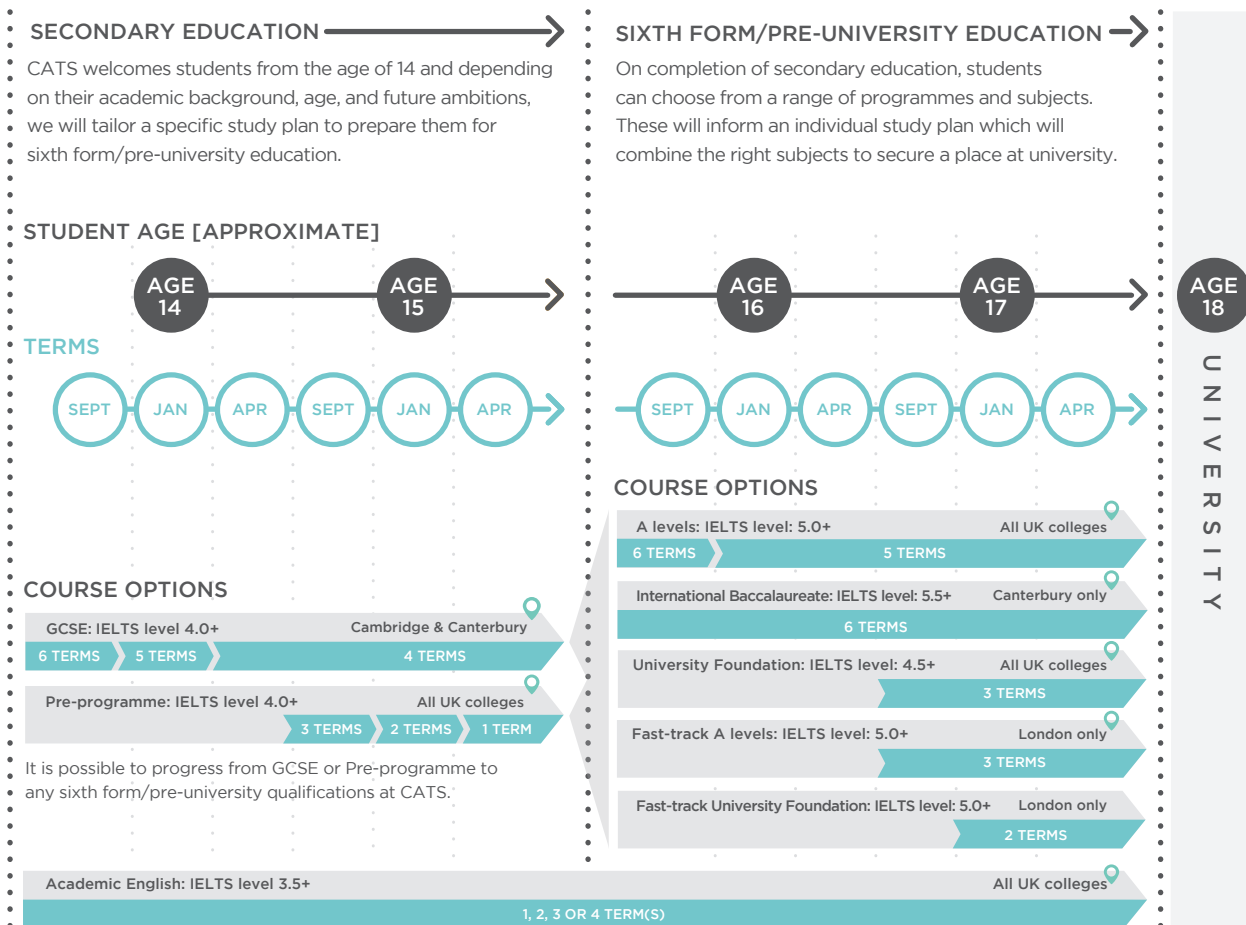
Programme options	3
GCSE/Pre-programme	4
A level/Fast-track A level	5
International Baccalaureate	6
University Foundation Programme	7
Term dates 2016-2017	8
Summer programme dates 2016-2017	9
CATS Cambridge fees	10
CATS Canterbury fees	11
CATS London fees	12
Terms and conditions	13
Application form	17

Programme options

We offer a large range of study programmes – a pathway to university success.

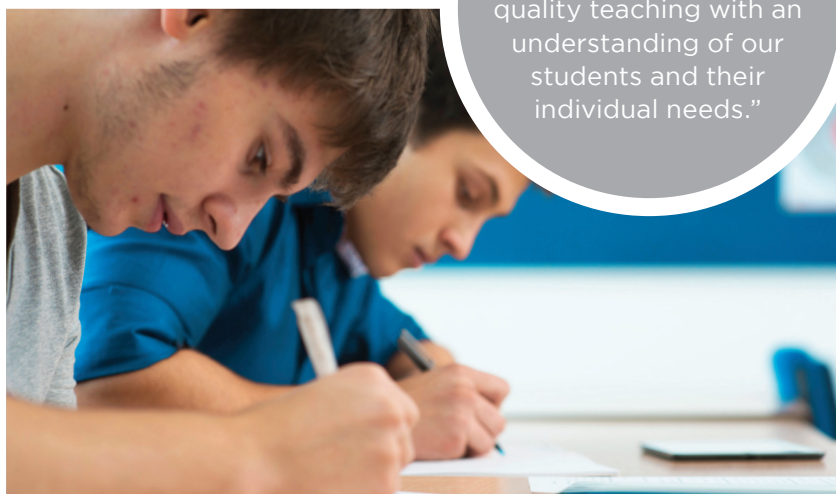
Our courses are carefully managed to suit a range of ages and abilities with the study of English language at the heart of everything we do.

Students at CATS attend English classes as a core part of the curriculum. Our expert subject teachers help non-native speakers forge ahead with their learning and we also offer additional subject specific vocabulary tuition.





“Our philosophy is simple: we combine exceptionally high-quality teaching with an understanding of our students and their individual needs.”



CATS Advantage

- Studying with 70 different nationalities will enhance your skill set
- On average CATS students outperform their ALIS* predictions by at least one grade
- Our approach to small classes and individual learning plans ensures our students stay on track for success
- Every student meets their personal tutor weekly
- We support every aspect of the decision-making and application process for progression to university
- CATS Plus helps our students to establish their chosen career and university goals

* Developed by Durham University to measure student predicted grades.

FIND OUT MORE

GCSE/Pre-programme:
IELTS level: 4.0+ Page 4

A levels:
IELTS level: 5.0+ Page 5

Fast-track A levels:
IELTS level: 5.0+ Page 5

International Baccalaureate:
IELTS level: 5.5+ Page 6

University Foundation:
IELTS level: 4.5+ Page 7

Fast-track University Foundation:
IELTS level: 5.0+ Page 7



GCSE

General Certificate of Secondary Education is a two-year study plan which provides a solid secondary education foundation before choosing the right study pathway on to university.

Quick facts:

- Age: 14+
- Entry requirements: 8 or 9 years of schooling completed with a good school report
- English language level: IELTS 4.0+ (4.5+ for April start)
- Start dates: September, January, April
- Course length: 6, 5 or 4 terms
- Average class size: 10
- Hours per week: 30+

Pre-programme

A flexible programme of study designed to prepare students to study A level, International Baccalaureate or University Foundation, with the option of GCSE or IGCSE if required.

Quick facts:

- Age: 15+
- Entry requirements: 8 or 9 years of schooling completed with a good school report
- English language level: IELTS 4.0+ (3 terms)
- Start dates: September, January, April or July
- Course length: 3, 2 or 1 term(s)
- Average class size: 10
- Hours per week: 30+

	Cambridge		Canterbury		Pre-programme London
	Year 1	Year 2	Year 1	Year 2	
Maths	C	C	C	C	C
English Language/Literature	C	C	C	C	C
Biology, Chemistry, Physics*	C C C	C C C	C C C	C C C	C C C
Extra Science	✓	✓			
Art & Design	✓	✓	C		C
Business Studies	✓	✓			C
Computing			C		
Drama			C		
Geography	✓	✓	C	✓	
History	✓	✓	C	C	
Latin			✓		
Media Studies	✓	✓			
Modern Foreign Languages	✓	✓		✓	✓
Psychology			C		

C = Compulsory subjects **✓** = Optional subjects * = Equivalent to two GCSEs

All London students starting Pre-programme in September will take IGCSEs

Extra Science may be taken as an option resulting in three Science GCSEs.

In Canterbury, students follow the UK government English Baccalaureate curriculum. This includes all the compulsory subjects students need for future study, listed above, as well as Music and Creativity, Activity and Service.

Subjects may change, and are not guaranteed. Students should visit our website for the latest course availability information.

A level

Fast-track A level

The classic route to university in the UK, and recognised by many of the best universities around the world. It is designed for confident students who aspire to the most competitive degree courses at UK universities and beyond.

Quick facts:

- Age: 15½+
- Entry requirements: A secondary or high school level of education and a good school report
- English language level: IELTS 5.0+
- Start dates: 6 term: September and January
5 term: January

Quick facts:

- Age: 17+
- Entry requirements: A good secondary or high school level of education and good school report (previous experience in the subject and level is preferable)
- English language level: IELTS 5.5+
- Start dates: September
- Course length: 3 terms

Subjects

Depending on university and career aspirations, we work with all of our students to help them choose the most suitable combination of subjects.
6 terms: students choose three or four subjects for the first year, and three will usually be continued in the second year.
5 and 3 terms: students choose three subjects to study for the full duration of their A level study.
 English for Academic Purposes is compulsory on all pathways for non-native speakers. Subjects may change, and are not guaranteed. Students should visit our website for the latest course availability information and use this table as a guide to indicate their subject preferences.

	Cambridge		Canterbury		London		
	6 term (Sept start)	5 term (Jan start)	6 term (Sept start)	6 term (Jan start)	6 term (Sept start)	5 term (Jan start)	3 term (Sept start)
Accounting	✓	✓	✓		✓	✓	✓
Biology	✓	✓	✓	✓	✓	✓	✓
Business Studies	✓	✓	✓	✓	✓	✓	✓
Chemistry	✓	✓	✓	✓	✓	✓	✓
Computing			✓				
Economics	✓	✓	✓	✓	✓	✓	✓
English Literature	✓				✓		
Fine Art	✓		✓		✓	✓	✓
Further Maths	✓		✓				✓
Geography	✓		✓		✓		✓
Government and Politics					✓	✓	✓
History	✓		✓		✓	✓	✓
History of Art	✓						
Law			✓	✓			
Maths	✓	✓	✓	✓	✓	✓	✓
Media	✓		✓				
Photography	✓				✓	✓	✓
Physics	✓	✓	✓	✓	✓	✓	✓
Politics	✓						
Psychology	✓		✓	✓	✓	✓	✓
Sociology	✓		✓	✓	✓	✓	✓
Languages available:	<input type="radio"/> Chinese <input type="radio"/> Russian <input type="radio"/> German <input type="radio"/> French <input type="radio"/> Spanish	N/A	<input type="radio"/> Cantonese <input type="radio"/> French <input type="radio"/> German	<input type="radio"/> Mandarin <input type="radio"/> Russian <input type="radio"/> Spanish	<input type="radio"/> Chinese* <input type="radio"/> French <input type="radio"/> German* <input type="radio"/> Italian	<input type="radio"/> Japanese* <input type="radio"/> Russian* <input type="radio"/> Spanish	
Students are encouraged to study their native language at A level.			<input type="radio"/> Others on request <input type="radio"/> Non-exam native language and literature in up to 26 languages Art portfolio (non-exam) available for Jan and Sept start.		* Examination only, no tuition provided.		

Subjects may change, and are not guaranteed. Students should visit our website for the latest course availability information.

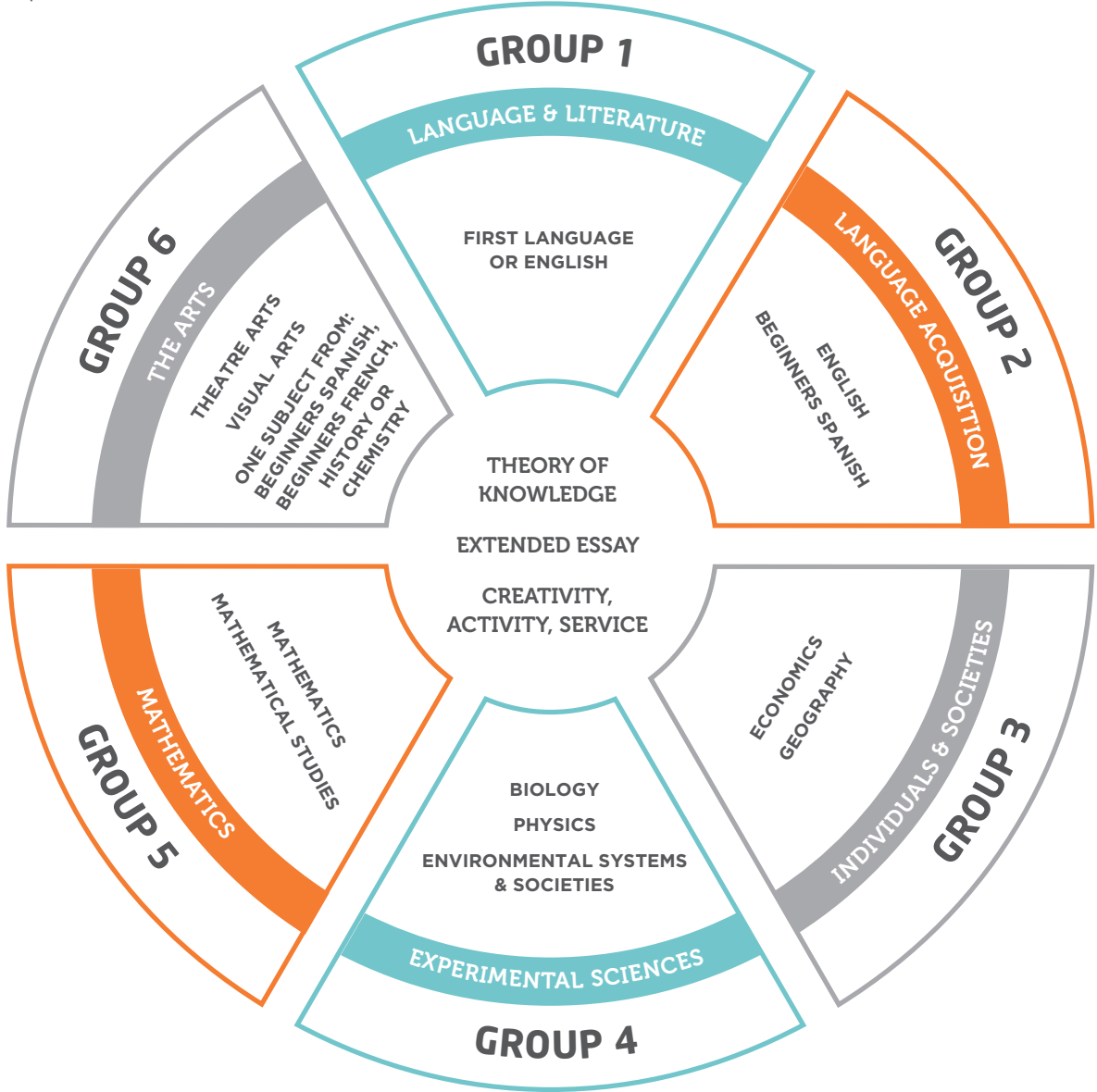
International Baccalaureate

A two-year programme, designed for motivated, capable students who show an interest across a broad range of subjects.

All students study core subjects and choose one subject from each of the groups one to six.

Quick facts:

- Age: 15+
- Entry requirements: A good secondary or high school level of education
- English language level: IELTS 5.5+
- Start dates: September
- Course length: 6 terms



Subjects may change, and are not guaranteed. Students should visit our website for the latest course availability information.

University Foundation Programme

A one-year programme designed for international students looking for UK university entry. Designed for motivated students looking for a supported and focused bridge programme from international high school to UK universities.

Quick facts:

- Age: 16½+
- Entry requirements: A good secondary or high school level of education
- English language level: IELTS 5.0+
- Start dates: September and January
- Course length: 3 terms
- Fast-track: 2-term option available in London

Subjects

Students choose three subjects to study for the full one year programme. Academic English is compulsory for all non-native speakers.

We guide students to the best combination of subjects depending on the subject they wish to study at university.

	Cambridge		Canterbury		London	
	3 term (Sept start)	3 term (Sept start)	3 term (Jan start)	3 term (Sept start)	2 term (Jan start)	
Accounting	✓	✓		✓	✓	
Biology	✓	✓	✓	✓	✓	
Business Studies	✓	✓	✓	✓	✓	
Chemistry	✓	✓	✓	✓	✓	
Computing		✓				
Economics	✓	✓	✓	✓	✓	
Fine Art		✓				
Geography		✓		✓		
Government and Politics				✓	✓	
History		✓		✓	✓	
International Relations		✓	✓			
Law		✓	✓			
Mathematics	✓	✓	✓	✓	✓	
Media Studies		✓				
Physics	✓	✓	✓	✓	✓	
Psychology		✓	✓	✓		
Sociology	✓	✓	✓	✓		

CATS Canterbury also offers Art Portfolio (non-exam) for January start.

Students should use this table as a guide to indicate their subject preferences.

Example subject combinations, in preparation for some of the key professions:

Law	Engineering	Business	Media	Sciences
○ Maths	○ Maths	○ Business	○ Media Studies	○ Biology
○ Sociology	○ Physics	○ Geography	○ Psychology	○ Chemistry
○ Law/History	○ Chemistry	○ Economics	○ Business Studies	○ Maths

Subjects may change, and are not guaranteed. Students should visit our website for the latest course availability information.

Term dates 2016-2017

Cambridge, Canterbury, London

Autumn term 2016

Autumn term:	Monday 5th September 2016 – Friday 9th December 2016
Half term vacation:	Saturday 22nd October 2016 – Sunday 30th October 2016
Christmas vacation:	Saturday 10th December 2016 – Monday 2nd January 2017

Spring term 2017

Spring term:	Tuesday 3rd January 2017 – Friday 31st March 2017
Half term vacation:	Saturday 11th February 2017 – Sunday 19th February 2017
Easter vacation:	Saturday 1st April 2017 – Sunday 17th April 2017

Summer term 1 - 2017

Summer term:	Tuesday 18th April 2017 – Thursday 15th June 2017*
Summer vacation - Canterbury Summer term 2 students only	Friday 16th June 2017 - Sunday 2nd July 2017
Summer term for Fast-track University Foundation Programme (London only)	Tuesday 18th April 2017 – Friday 30th June 2017

*A2 Students

A2 students must stay until they have completed all exams. If this is before Thursday 15th June 2017 they may leave earlier, but they must confirm with the College beforehand. All other students must stay until Thursday 15th June 2017.

Summer term 2 - 2017 (Canterbury only)

Summer term:	Monday 3rd July 2017 – Friday 11th August 2017
---------------------	--

Summer term 2 caters for the following programmes:

January 2017 start 6 term GCSE, A Level, and 3 term University Foundation Programme

Summer Pre-programme or students studying Academic English Module. Academic English Module students may continue until the start of Autumn Term in September 2017 if booked in advance and spaces are available.

Summer programme dates 2016-2017

Cambridge, Canterbury, London

Summer programmes	2016	2017
Summer Oxbridge Preparation Programme (Cambridge)	Sunday 26th June - Saturday 16th July	Sunday 25th June - Saturday 15th July
Careers in Law, Business & Finance Taster Programme (Canterbury)	Sunday 3rd July - Saturday 23rd July Sunday 24th July - Saturday 13th August	Sunday 2nd July - Saturday 22nd July Sunday 23rd July - Saturday 12th August
UK Education Taster Programme (Canterbury)	Sunday 3rd July - Saturday 23rd July Sunday 24th July - Saturday 13th August	Sunday 2nd July - Saturday 22nd July Sunday 23rd July - Saturday 12th August
Medics Preparation Programme (London)	Sunday 21st August - Saturday 3rd September	Sunday 20th August - Saturday 2nd September

Summer preparatory programmes	2016	2017
Academic English Programme (All UK Colleges - weekly starts)	Sunday 3rd July - Saturday 20th August	Sunday 2nd July - Saturday 19th August
Summer Bridging Programme Available in Cambridge only for students that do not wish to travel home. (Cambridge - 2 weeks)	Sunday 21st August - Saturday 3rd September	Sunday 20th August - Saturday 2nd September

Fees

CATS Cambridge

Tuition fees	Discounted advance price#	3 termly payments	Per term
GCSE	£24,800	£25,305	£8,435
Pre-programme	£24,800	£25,305	£8,435
A level (5 and 6 terms)	£24,800	£25,305	£8,435
Additional A level subject	£4,500	£4,590	£1,530
University Foundation Programme	£24,800	£25,305	£8,435
Academic English Module Termly (up to 4 terms) [†]	£18,730	£19,110	£6,370
Academic English Module Weekly (up to 7 weeks and includes accommodation)	£950	N/A	N/A
High School Term (2 terms)	£18,110	£18,480	£9,240
High School Term (1 term)	N/A	N/A	£9,240
Summer School 2016 - Summer Oxbridge Preparation Programme (3 weeks and includes accommodation)	£3,450	N/A	N/A
Summer Bridging Programme (2 weeks and includes accommodation)	£1,340	N/A	N/A

[†] Price shown is for 3 terms. Extended programmes also available - please see website for more details.

All courses are subject to a £200 registration fee and a refundable deposit of £2,300 (refundable at the end of your course), with the exception of the following: High School Term students (1 and 2 term) pay a reduced deposit of £800. Summer School 2016 programmes are only subject to a registration fee of £100.

A 5% discount is available for 3-term fees when paid in full by 31st March 2016.

A 2% advance payment discount is given on programmes of 2 terms or more if payment for tuition and accommodation fees is made in full at least 2 weeks prior to the start of the course. For September 2016 start courses advance fees must be paid by Friday 19 August 2016, and for January 2017 start courses advance fees must be paid by Friday 16 December 2016.

Accommodation fees

The catered accommodation fee includes breakfast, lunch and an evening meal on weekdays and brunch and supper at the weekend during term time.

Day students or self-catered students will need to purchase any meals required. College policy is that all under 18s are catered.

Catered	Discounted advance price#	3 terms	Termly payment	Under 16 years	16-17 years	18+ years
College residence, all ensuite	£13,055	£13,320	£4,440	✓	✓	✓
Homestay single	£9,085	£9,270	£3,090	x	x	✓
Self-catered	Discounted annual price#	3 terms	Termly payment	Under 16 years	16-17 years	18+ years
College residence, all ensuite	£10,675	£10,890	£3,630	x	x	✓

Weekly fees during vacation

Under 18 residence (includes meals)	£670
Over 18 residence (includes meals)	£400
Over 18 residence (self-catered)	£300

Students who wish to store their belongings over the Summer will incur a storage fee.

Prices from £120 (for 12 wks).

Airport transfers

All unaccompanied students under 16 will incur an additional £50 fee

Heathrow	£190
Gatwick	£220
Stansted	£110
Other London	£190

Additional fees

Registration fee	£200
Refundable deposit	£2300
Coursebooks, some materials and examination fees (as applicable)	
Optional social activities (as applicable)	

CATS Canterbury

Tuition fees	Discounted advance price#	3 termly payments	Per term
GCSE	£17,450	£17,805	£5,935
Pre-programme	£17,450	£17,805	£5,935
A level (5 and 6 terms)	£17,450	£17,805	£5,935
Additional A level subject	£4,500	£4,590	£1,530
International Baccalaureate Diploma	£17,450	£17,805	£5,935
University Foundation Programme	£17,450	£17,805	£5,935
Academic English Module Termly (up to 4 terms) [†]	£17,450	£17,805	£5,935
Academic English Module Weekly (up to 7 weeks and includes accommodation)	£910	N/A	N/A
High School Term (2 terms)	£13,200	£13,470	£6,735
High School Term (1 term)	N/A	N/A	£6,735
Summer School - Careers in Business, Finance and Law/UK Education Taster Programme/ Academic English Programme (3 weeks and includes accommodation)	£3,450	N/A	N/A

[†] Price shown is for 3 terms. Extended programmes also available - please see website for more details.

All courses are subject to a £200 registration fee and a refundable deposit of £2,300 (refundable at the end of your course), with the exception of the following: High School Term students (1 and 2 term) pay a reduced deposit of £800. Summer School 2016 programmes are only subject to a registration fee of £100.

A 5% discount is available for 3-term fees when paid in full by 31st March 2016.

A 2% advance payment discount is given on programmes of 2 terms or more if payment for tuition and accommodation fees is made in full at least 2 weeks prior to the start of the course. For September 2016 start courses advance fees must be paid by Friday 19 August 2016, and for January 2017 start courses advance fees must be paid by Friday 16 December 2016.

Accommodation fees

The catered accommodation fee includes breakfast, lunch and an evening meal on weekdays and brunch and supper at the weekend during term time.

Day students or self-catered students will need to purchase any meals required. College policy is such that all under 18s are catered.

Catered	Discounted advance price#	3 terms	Termly payment	Under 16 years	16-17 years	18+ years
Single, ensuite	£12,615	£12,870	£4,290	✓	✓	✓
Single	£8,970	£9,150	£3,050	✓	✗	✓
Shared, some ensuite	£8,970	£9,150	£3,050	✓	✓	✗
Homestay single	£8,970	£9,150	£3,050	✗	✗	✓

Weekly fees during vacation

Under 18 residence (includes meals)	£670
Over 18 residence (includes meals)	£400

Students who wish to store their belongings over the Summer will incur a storage fee.

Prices from £120 (for 12 wks).

Airport transfers

All unaccompanied students under 16 will incur an additional £50 fee

Heathrow	£180
Gatwick	£180
Stansted	£180
London Other	£180
Ashford Eurostar or Dover	£90
Ebbsfleet International	£110

Additional fees

Registration fee	£200
Refundable deposit	£2,300
Coursebooks, some materials and examination fees (as applicable)	
Optional social activities (as applicable)	

CATS London

Tuition fees	Discounted advance price#	3 termly payments	Per term
Pre-programme	£21,875	£22,320	£7,440
University Foundation Programme	£21,875	£22,230	£7,440
Fast-track Foundation (2 terms)	£17,525	£17,880	£8,940
A level (5 and 6 terms)	£21,875	£22,230	£7,440
Additional A level subject	£4,500	£4,590	£1,530
Fast-track A level (3 terms - 3 subjects)	£21,875	£22,320	£7,440
Academic English Module Termly (up to 4 terms) [†]	£18,730	£19,110	£6,370
Academic English Module Weekly (up to 7 weeks and includes accommodation)	£1,100	N/A	N/A
High School Term (2 terms)	£15,985	£16,310	£8,155
High School Term (1 term)	N/A	N/A	£8,155
Summer Medics Preparation Programme (2 weeks and includes accommodation)	£3,950	N/A	N/A

[†] Price shown is for 3 terms. Extended programmes also available - please see website for more details. All courses are subject to a £200 registration fee and a refundable deposit of £2,300 (refundable at the end of your course), with the exception of the following: High School Term students (1 and 2 term) pay a reduced deposit of £800. Summer School 2016 programmes are only subject to a registration fee of £100.

A 5% discount is available for 3-term fees when paid in full by 31st March 2016.

A 2% advance payment discount is given on programmes of 2 terms or more if payment for tuition and accommodation fees is made in full at least 2 weeks prior to the start of the course. For September 2016 start courses advance fees must be paid by Friday 19 August 2016, and for January 2017 start courses advance fees must be paid by Friday 16 December 2016.

Accommodation fees

The catered accommodation fee includes breakfast, lunch and an evening meal on weekdays and brunch and supper at the weekend during term time.

Day students or self-catered students will need to purchase any meals required. College policy is such that all under 18s are catered.

Catered	Discounted advance price#	3 terms	Termly payment	Under 16 years	16-17 years	18+ years
Single, ensuite	£21,465	£21,900	£7,300	✓	✓	✗
Shared, ensuite	£15,290	£15,600	£5,200	✓	✓	✗
Single, ensuite	£15,290	£15,600	£5,200	✗	✗	✓
Homestay single	POA	POA	POA	✗	✗	✓
Self-catered	Discounted annual price#	3 terms	Termly payment	Under 16 years	16-17 years	18+ years
Single, ensuite	£13,495	£13,770	£4,590	✗	✗	✓

Weekly fees during vacation

Under 18 residence (includes meals)	£750
Over 18 residence (includes meals)	£560
Over 18 residence (self-catered)	£450

Students who wish to store their belongings over the Summer will incur a storage fee. Prices from £120 (for 12 wks).

Airport transfers

All unaccompanied students under 16 will incur an additional £50 fee

Heathrow	£200
Gatwick	£230
Stansted	£200
London City	£170
London St Pancras Eurostar	£80
Other London	£170

Additional fees

Registration fee	£200
Refundable deposit	£2,300
Coursebooks, some materials and examination fees (as applicable)	
Optional social activities (as applicable)	

Terms and Conditions

Definitions

- i)** 'The College' - CATS - at the relevant location as detailed in a student's offer letter.
- ii)** 'The Student' - the person who is studying their academic programme at CATS College.
- iii)** 'Fee Payer' - person responsible for the payment of fees. Hereafter the 'Fee Payer' may be the parent, guardian or their designated Agent acting on their behalf.
- iv)** 'Parent' - all natural parents, whether they are married or not, any person who, although not a natural parent, has parental responsibility for a child or young person or any person who, although not a natural parent, has care of a child or young person (having care of a child or young person means that the child lives with and is looked after by that person, irrespective of what their relationship is).
- v)** 'Guardian' - a person who has been appointed by a judge to take care of a minor child personally and/or manage that person's affairs.
- vi)** 'Carer' - someone who cares for a child under 18 years of age.
- vii)** 'Agent' - the person or organisation that the Parent, Guardian, Carer or Student has entered into a contract with directly for the provision of services relating to educational choices advisory.

1 Important

Please read these conditions carefully as they shall form part of the contract between the Fee Payer and the relevant College. It is important that you make sure that you have read and understood all of these conditions as you confirm that you accept these conditions when you sign the registration form. The terms and conditions apply regardless of changes made to a student's study programme - or as originally stated on the Application form, subject to the College giving reasonable notice of such changes wherever possible.

2 Application and enrolment

- i)** To enrol a student at the College, the application form must be completed, signed by the Student and Fee Payer. Please send your application directly to Admissions with the following items:
- a)** The student's full academic transcripts/reports and evidence of English language level
- b)** Four passport-size photographs
- c)** A copy of the student's passport and all prior UK visa pages if applicable. Students are required to fully disclose any prior application to enter the UK, including any visa refusals received, together with information about the level and content of any prior studies undertaken in the UK. This is an immigration requirement before we can sponsor any student.
- d)** Payment of £2,500 to cover the registration fee (£200) and the initial deposit (£2,300).
- ii)** The College will confirm as soon as possible whether or not the enrolment has been accepted.
- iii)** Formal enrolment documentation will be sent to you once the application has been accepted.

3 Payment of fees for tuition and accommodation

- i)** The fees can be paid by termly instalments at the applicable termly rate for the Programme for which the student is enrolled by the Fee Payer. Payment must be made at least 2 weeks before the start of the relevant term. An advance payment discount is available on programmes of 2 terms or more if fees are paid in full at least 2 weeks before the start of the programme.
- ii)** Tuition and accommodation is dependent upon the fees for the relevant term being paid in full. If payment of the relevant term's fees has not been made in full on the due date by the Fee Payer, the College will charge interest at the rate of 2% per month on the outstanding balance until it is paid. If payment becomes overdue the College reserves the right to suspend or cancel tuition and/or accommodation. In cases of extreme or repeated failure to make payment by the due date, the College may require payment for the remainder of the academic year in full, including fees for future terms which may not yet be due. The student may be prevented from sitting examinations or the results of examinations and/or College references or other information may be withheld where fees remain unpaid in whole or in part.
- iii)** Fees may be paid in three ways:
- a)** By bank transfer to the following account. An additional GBP £12 must be transferred with the fees to cover bank charges.

Important: A payment reference must be provided by the Fee Payer so that the College can identify funds on safe arrival into our account. The reference must be the student's CEG reference number and full name as written in English.

For CATS Cambridge

Bank name & address:
Natwest Cambridge,
23 Market Street, Cambridge CB2 3PA
Sort code: 60 - 04 - 23
Account number: 59812796
Account name:
Cambridge Arts & Sciences Limited
Swift code (BIC): NWBKGB2L
IBAN: GB42NWBK60042359812796

For CATS Canterbury

Bank name & address:
Natwest,
City Centre Branch, 11 The Parade,
Canterbury, Kent, CT1 2SQ
Sort code: 60 - 04 - 27
Account number: 90780329
Account name: CATS Canterbury Limited
Swift code (BIC): NWBKGB2L
IBAN: GB46NWBK60042790780329

For CATS London

Bank name & address:
Natwest Cambridge,
23 Market Street, Cambridge CB2 3PA
Sort code: 60 - 04 - 23
Account number: 89812417
Account name:
CATS College London Limited
Swift code (BIC): NWBKGB2L
IBAN: GB45NWBK60042389812417

- b)** Via our online payment partner, peerTransfer/Flywire.

- For payments made from outside the UK
 - Most local currencies available as well as GBP, USD and EUR
 - Competitive foreign exchange rates
 - No bank charges
 - Credit Card payment option available
- Simply visit <http://catseducation.peertransfer.com>
- c)** By credit/debit card subject to a 2% surcharge for credit card payment.

4 Provision of tuition

The College reserves the right to withdraw from offer a Programme or subject within a Programme at any time, giving reasonable notice wherever possible, and will provide a suitable alternative Programme or subject wherever possible. If an alternative suitable Programme cannot be agreed then fees will be refunded for any unexpired portion of the course.

5 Fee increases

Fees are adjusted annually in September for each new academic year. The College reserves the right in exceptional circumstances to increase the fees at any time but fee increases will not apply in cases where the fees have already been paid.

6 Expenses

The College regrets that it cannot extend credit to students. All additional services (trips, examination fees, materials, etc) must be paid for in advance in cash if the College so requests. Please note that study materials are not routinely included in the fees. Any invoiced expenses will be due for payment within fourteen days by the Fee Payer.

7 Late arrival

Students are expected to make travel arrangements to ensure they can attend from the first day of term. UK Visas and Immigration Service ("UKVI") restrict entry to the UK for late arrivals in certain circumstances. The College requires all late arriving students to provide regular updates on their expected arrival dates and may in certain cases have to defer a student's entry to a subsequent term, usually if a student does not arrive within one month of the course start date. In such cases the cancellation and withdrawal policies will continue to apply.

8 Withdrawal

- i)** In order to withdraw a student from a Programme, or from part of a Programme that has already started, the Fee Payer is required to give notice, in writing, at least 12 weeks before the start of the term in which the withdrawal takes effect. Failure to give such notice will oblige the Fee Payer to pay the College the remainder of the academic term's fees plus one term's fees in lieu of notice. In the event of a student being withdrawn without 12 weeks' written notice being provided to the Principal and receipt acknowledged in writing, fees will be charged for the remainder of the current term plus a full term's fees. Any students withdrawing from a CATS College Programme of study

will be reported to the UKVI and potentially to the British Embassy / High Commission in their home country as a curtailment of their Programme. Any student withdrawing will be required to provide documentary evidence of their return to their home country (eg visa stamp) or their sponsorship by a new educational establishment (eg CAS documents from new sponsor).

ii) If a student wishes to transfer from a Programme that has already started onto another, the Fee Payer is liable for the full academic year's fees amounting to the higher of the two programmes.

iii) The College is unable to refund fees when the student is absent (from Programmes) due to illness or injury or other emergency, unforeseen event or change in personal circumstances. The Fee Payer is therefore advised to arrange adequate insurance to provide cover for the refund of fees in such cases of illness or injury or other emergency, unforeseen event or change in personal circumstances.

9 Cancellation

i) The acceptance of a student's enrolment at the College means that a place has been reserved for the student at the College. In cases where that place is cancelled by the Fee Payer, the following charges shall apply:

- a) 12 weeks or more before the Programme starts – £200 administration fee
- b) 8 - 12 weeks before the Programme starts – £2,300
- c) 1 - 8 weeks before the Programme starts – half a term's tuition and accommodation fees
- d) 1 week before the Programme starts or after it has started – the full applicable tuition and accommodation fee. Written cancellation must be given to the Principal and receipt will be acknowledged in writing. Failure to provide written cancellation will incur the full termly fee applicable.
- e) If cancellation is due to visa refusal through no fault of your own, in normal circumstances the college will refund all fees paid excluding the £200 registration fee. Full written details including evidence of refusal will be required.
- f) "Cooling off" period: under UK consumer law you have the right to change your mind within 14 days of your original enrolment, starting from the date on which your deposit to reserve your place is paid. In this event, fees will be returned to you, net of bank charges. You must make a clear statement of cancellation to us in writing, either to admissions@ceg-uk.com, or using the cancellation form available at <http://www.catseducation.com/contact.htm>

10 Medical Provision

i) If, as a result of illness or injury or other emergency, unforeseen event or change in personal circumstances, a place at the College is cancelled, or a student is withdrawn from a Programme, then the relevant charges or fees, set out in section 7 and 9 above, will apply.

ii) The College does not provide or insure for the provision of medical or dental treatment whilst in the UK. Students are advised to check eligibility for free of charge emergency NHS treatment and to obtain adequate insurance prior to travel for all other medical care.

iii) Students studying for less than 6 months should ensure they obtain appropriate medical insurance cover prior to their arrival, as NHS medical treatment may be refused or

require payment, depending on local rules.

iv) All students on courses lasting 6 months or more will be offered registration with an NHS doctor. The cost to see a private doctor can vary and can be requested via the College's medical centre. The student will be liable for this cost. All routine medical checks, including dentists, should be organised by yourselves during college holidays. Emergency dental/orthodontic treatment is on a private basis, appointments can be made via the Medical Centre. The student will be charged directly by the dentist that they see and some charges may be payable in advance.

v) The College is unable to refund fees when the student is absent (from Programmes) due to illness or injury or other emergency, unforeseen event or change in personal circumstances. The Fee Payer is therefore advised to arrange adequate insurance to provide cover for the refund of fees in such cases of illness or injury or other emergency, unforeseen event or change in personal circumstances.

11 Grounds for exclusion

i) The student must abide by the College's rules as set out in the prospectus and the Student Handbook (located at <http://www.catseducation.com/en/about/welfare/>) or as may be published or announced by the Principal from time to time.

ii) The College reserves the right to require a student's withdrawal including immediate withdrawal from a Programme, or part of a Programme, for a serious or aggravated disciplinary or behavioural matter including continued or repeated misconduct, or if it is considered by the Principal that such a withdrawal is in the best interests of the student or other students.

iii) In the event of a student's temporary or permanent exclusion from a Programme, or expulsion from the College, no refund of tuition or accommodation fees for the current academic year, or deposit, will be made.

iv) In the event of a student being excluded from a Programme or part of a Programme arrangements will be made for the student to return home at the earliest possible opportunity, and the student will be required to confirm their safe arrival to their home country for onwards evidence to the UKVI.

Their visa sponsorship will be withdrawn. In this event, any relevant costs and expenses incurred by the College, including the costs of shipping/storing personal property, shall become payable by the Fee Payer.

v) Attendance is monitored in two ways, by overall percentage and by "contact points" in accordance with UKVI regulations.

Students are required to maintain appropriate levels of attendance and may be expelled and/or reported to the UKVI should this fall below the required level.

vi) It is important that the College is made aware of any welfare or medical conditions or disabilities. If a student arrives at College with a pre-existing condition which was not declared at the time of application, the College reserves the right to either ask the student to leave the College or to send the student for private medical or psychological treatment or for tests, which will be at the Fee Payer's expense.

vii) Substance Misuse: the Parents, Guardians or Carers for the student consent to them providing samples that may be

required, where appropriate given the age of the student, adhering to the College substance misuse policy.

12 Academic performance

i) The student is accepted at the College on the understanding that progression through the relevant Programmes is conditional upon satisfactorily attending lessons and attaining reasonable performance targets. English for Academic purposes will form part of a student's study Programme until such point as they reach IELTS 7.5 in all areas.

ii) If, in the reasonable opinion of the Principal, the student has not satisfactorily attended lessons or has achieved below 95% attendance in each element including authorised absences (minimum 80% actual attendance), or has failed to attain reasonable performance targets, the College may not enter the student for public or internally accredited examinations or allow the student to continue with the programmes for which they are enrolled. In such circumstances the student may be offered suitable alternative Programmes or asked to withdraw from the College. In the event of a student being withdrawn no refund of the term's fees or deposit will be made. See sections 7 & 8.

iii) Any student found to have misled the College as to their qualifications, medical or psychological history, learning difficulties, prior UK Visa history or suitability for entry will be subject to expulsion from the College without recourse to refund of tuition fees already paid. Should an alternative Programme be more suitable, a student may be supported to make this change, it should be noted that such a change in Programme may also result in changes to visa details in which case the UKVI may need notification.

iv) The College will support all students in their applications through UCAS to university in the UK. If a student applies without the College's involvement then the College has limited ability to assist if such applications are unsuccessful. It is the duty of the student to ensure all supporting qualification documents are valid originals and can be corroborated by the relevant university admissions department if required.

13 Accommodation

i) The student under the age of 21 is expected to live in College accommodation unless either living with a Parent or Guardian aged at least 21 years (subject to College approval), within reasonable travelling distance of the College unless agreement otherwise is made with the Principal, or where there are exceptional health or welfare circumstances.

ii) While the College will use its reasonable endeavours to provide a student with the accommodation requested on the registration form, their preference is not guaranteed and confirmation will be made prior to arrival.

iii) The student may at any time be asked to change accommodation where this is due to misbehaviour, miscreant or otherwise, due to the negligence, act or omission thereof of the student. Any additional supplement shall become immediately payable.

iv) Should the student wish to change or move out of College accommodation the Fee Payer, is required to submit a request

for approval from the Principal, in writing, at least 12 weeks before the start of the term in which the change takes effect, otherwise they will be charged accommodation fees in lieu of notice for the full academic term. Should a student move out of college accommodation without prior approval from the Principal, accommodation fees will be charged for the remainder of the academic year.

v) Students who begin their studies in January may be required to change the location of their accommodation in Summer Term 2.

vi) Students in college owned accommodation **are not charged during half term** although most students return home. Students under 18 remaining in college during holidays will be required to attend additional activity and/or taught sessions during the day, over and above those required of under 18 years old. Students under 16 on 1 September remaining in accommodation during vacation periods may be required at the discretion of the Principal to undertake additional sessions during both half term or holiday times and additional charges may be levied for such activities.

14 Penalties and fines

i) The student is liable for any breakages, loss or damage caused by the student to the premises in which the student is being taught or is living.

ii) Breakages, loss or damage in shared rooms or communal living areas are considered the joint responsibility of the students in occupation, and will be recovered as such, unless an individual student accepts responsibility for such damage caused.

iii) The College may impose a reasonable penalty or fine for other forms of misconduct such as contravening health & safety regulations or infringing College policy.

15 Personal property

The College does not accept responsibility or liability whatsoever, including liability through the acts, omissions or negligence of its employees, agents or assignees for the student's personal property, and the student is required to take out personal insurance to cover any loss or damage to personal property which may occur while the student is at the College. The Student, Parents, Guardians or Carers for the student, and the Fee Payer, should take independent advice on the content of such policies before committing themselves.

16 Publicity

By enrolling with the College, the student, Parents, Guardians or Carers for the student, and the Fee Payer, consent to the reasonable use of the student's details and academic achievements, including images or recordings of the student howsoever made, for promotional purposes.

17 Data protection

Any information provided to the College may be held on computer and shall be used by the College in accordance with its data protection registration and the data protection principles. Details of these are provided in the Student Handbook which is accessible at: <http://www.catseducation.com/en/about/welfare/> and details of Cambridge Education

Group's Privacy Policy is at: <http://www.cambridgeeducationgroup.com/en/about-us/privacy-policy>

18 Liability

The College shall not be liable for either death or personal injury suffered by any student except as may arise through the negligence of the College. Parents and the student agree to notify the College of special dietary needs, allergies or other medical conditions where special arrangements have to be made. Parents and students also agree that the College may administer any non-prescription medication or first aid as is deemed appropriate and to seek medical, dental or optical treatment when required.

19 Complaints

Complaints should be addressed to the Principal of each of the respective Colleges. Our complaints policy can be located on each College's website at: <http://www.catseducation.com/about/policies.htm>

20 Reservation of rights

The College reserves the following rights in exceptional circumstances:

i) to alter the content, nature and venue of a Programme at any time

ii) to alter the details of any published information at any time

iii) to alter method of payment if deemed necessary at any time

iv) to assign the whole or any part of the agreement between the Fee Payer and the College, to any person or body, at any time.

21 Refund of deposits

The initial deposit cannot be used by the student to pay for expenses or cover shortfall in fees. The deposit that is required by the College cannot be refunded until the final account has been settled in full, around 3 months after the end of the student's course of studies. Only once a student's account has been fully settled will any remaining deposit funds be returned to the student or Fee Payer, as applicable. Advice will be sought from the Fee Payer as to the account details to be credited.

22 Vacation charges

i) Charges will be made should the student remain in College accommodation during vacation periods.

ii) Charges will be made if the student leaves belongings in College accommodation during vacations in such a state that it is not possible to clean, maintain or repair their room.

23 Payment to agents

Before applying to study with us you may have engaged an agent to offer you advice and support in applying for Programmes of study, and you may in some cases also have agreed to pay a fee to your agent for those services. We further understand that you wish us to pay that fee to your agent on your behalf (up to maximum limits as stated on www.ceg-uk.com/service-fees). Where this is the case we acknowledge that your tuition fees payable may include a sum owing by you to your agent up to a maximum limit as referred to above. We agree, at our discretion, to pay this sum to your agent up to a maximum limit per term

on your behalf and reduce your tuition fees owing to us accordingly provided that the following conditions are met:

- You enrol at CATS College;

- You correctly complete the application form to authorise us to make these payments to your nominated agent;

- You pay all relevant academic fees to the College as they become due;

- Your agent has achieved Approved Agent status, an Approved Agent being an agent that has entered into a contract with you directly for the provision of services that are of a level and nature which satisfies Cambridge Education Group's internal policies and expectations of an agent, and who has been confirmed by Cambridge Education Group as being such an agent. Provided the above conditions are met and if for any reason we decide not to pay an amount due to your agent on your behalf, then we will refund to you the amount owing to your agent up to the maximum limit, for you to pay across directly. If you have agreed with your agent that you will pay more than the maximum limit, then you will remain liable to pay any excess to your agent. Having satisfied the above conditions should you NOT wish us to make an automatic payment to the Agent used please notify Central Admissions on admissions@ceg-uk.com

24 School trips and off-site activities

By enrolling with the College the Parents, Guardians or Carers for the student consent to the student participating in all college trips and other activities off college premises and to be given first aid or urgent medical treatment during the activity or college trip.

25 Jurisdiction

These terms and conditions, and any disputes arising from contracts or agreements with the College shall be governed by and construed in accordance with English Law under the non-exclusive jurisdiction of the English Courts.

26 CATS Colleges

CATS College Cambridge is a division of Cambridge Arts & Sciences Limited (company no. 03454690) which is a limited liability company registered in England.

CATS College Cambridge trades at: 1 High Street Chesterton Cambridge CB4 1NQ.

CATS College London Limited (company no. 07442735) trades at 43-45 Bloomsbury Square London WC1A 2RA and is a limited liability company registered in England.

CATS Canterbury Limited (company no. 06355641) (known as CATS College Canterbury) trades at 68 New Dover Road Canterbury CT1 3LQ.

All of the above are limited liability companies registered in England.

Application Form

You can apply to CATS in two different ways; either online at www.catseducation.com/apply or via this application form. Applying online provides instant confirmation of our receipt of application, instant upload of your documents and a response from our Admissions Team within two working days. We recommend this option for the fastest application turnaround. For all Summer Programmes please apply online www.catseducation.com

STUDENT DETAILS – All details MUST be completed

Please complete this form in CAPITAL LETTERS in black ink.

Family Name:

First Name (s) :

Preferred Name :

Date of Birth:

Male/Female:

Nationality:

Home address:

Town:

Country:

Postcode:

Telephone (home):

Mobile:

Email:

Passport number:

LEVEL OF ENGLISH – All details must be completed

Please provide your current level of English. You may be reassessed on arrival.

Current overall level of English:

IELTS:

TOEFL:

PEARSON:

Other:

Please provide English level by band:

Listening:

Reading:

Writing:

Speaking:

CATS LOCATION

Please highlight your preferred CATS College location using 1, 2 and 3 in order of preference. 1 = your 1st choice and the College this application refers to.

Location:

Cambridge

Canterbury

London

PREFERRED START OF ACADEMIC PROGRAMME?

Please select the start date of your academic programme of study.

September

January

April

July

2016

2017

PROGRESSION

If known; what is your proposed career or university degree course?

PROGRAMME OF STUDY

Please select the programme of study you wish to follow. If you are not a native speaker, you will need to provide evidence of your English level to ensure the course chosen is suitable for you. If you think you will need additional English preparation before your main course, please select English below as well as the intended academic course.

Academic English Programme:	4 terms <input type="checkbox"/>	3 terms <input type="checkbox"/>	2 terms <input type="checkbox"/>	1 term <input type="checkbox"/>	Weekly <input type="checkbox"/>
GCSE:	6 terms <input type="checkbox"/>	5 terms <input type="checkbox"/>	4 terms <input type="checkbox"/>		
Pre-programme:	3 terms <input type="checkbox"/>	2 terms <input type="checkbox"/>	1 term <input type="checkbox"/>		
A level:	6 terms <input type="checkbox"/>	5 terms <input type="checkbox"/>	3 terms <input type="checkbox"/>		
International Baccalaureate Diploma:	6 terms <input type="checkbox"/>				
University Foundation Programme:	3 terms <input type="checkbox"/>	2 terms <input type="checkbox"/>			
High School Term:	3 terms <input type="checkbox"/>	2 terms <input type="checkbox"/>	1 term <input type="checkbox"/>		
Summer Medics Preparation Programme:	2 weeks London ONLY	<input type="checkbox"/>			

SUBJECTS – All details MUST be completed

Subject choices may be revised at any time up to the end of the induction week at CATS, if spaces are available. Please contact us if you would like to arrange a counselling interview to discuss your choices. Please note that subject choices are an indication only at this stage and cannot be guaranteed.

GCSE/Pre-programme:	1 <input type="text"/>	2 <input type="text"/>	3 <input type="text"/>
A level (6 terms):	1 <input type="text"/> 4 <input type="text"/>	2 <input type="text"/>	3 <input type="text"/>
A level (5 or 3 terms):	1 <input type="text"/>	2 <input type="text"/>	3 <input type="text"/>
IB:	1 <input type="text"/> 4 <input type="text"/>	2 <input type="text"/> 5 <input type="text"/>	3 <input type="text"/> 6 <input type="text"/>
University Foundation:	1 <input type="text"/>	2 <input type="text"/>	3 <input type="text"/>

English Language will be provided alongside all other courses for non-native speakers.

MEDICAL HISTORY

All medical information will be kept in the medical centre of CATS. Certain medical information, such as asthma, will be recorded in the College database so that teachers organising trips will be aware. Any information that you wish to keep confidential should be sent directly to the medical centre or emailed to:

CATS Canterbury: medical@catscanterbury.com

CATS London: medical@catslondon.com

CATS Cambridge: medical@catscambridge.com

In case of urgent medical intervention, I give permission for the Principal or delegated representative to authorise emergency medical intervention, including the use of anaesthetic, transfusion or any operation deemed by local medical experts.

I agree to provide CATS with full and up to date emergency contact details at all times.

I agree that CATS staff can dispense non-prescription medication and administer first aid to my child whilst they are under the care of the College.

ACCOMMODATION

Accommodation will be confirmed shortly before the start of term. Please note that Under 18s are expected to live in College accommodation if they are not living with their parents, and if they wish to live elsewhere this request must be submitted in writing to the Principal and approved before it is confirmed

Please specify if accommodation is required:

Yes

No

HOW DID YOU HEAR ABOUT US

Have you used an Educational Agent during your application process?

Yes

No

If yes, please complete the information below and see section 23 of the Terms and Conditions. If you are working with an Agent you must complete these details before we can process your application.

Name of Agent (in full):

Name of contact at Agent (in full):

Agent address (in full):

SIGNATURE

Signature of student:

PRINT NAME

Signature of Fee Payer:

PRINT NAME:

Date:

Date:

I have read and understood the terms and conditions of admission and accept that they will apply to this contract to the exclusion of all other terms and conditions. This agreement is subject to English law and any disputes shall be subject to the jurisdiction of the English courts.

I confirm that I give consent for the College to directly communicate with my parents/guardians and/or agents, on all matters relevant to my education and welfare after I become 18.

Get in touch, we would love to hear from you

CATS is part of Cambridge Education Group

Cambridge Education Group

Kett House
Station Road
Cambridge CB1 2JH
UK

Contact our Admissions Team

T +44 (0)1223 345698

F +44 (0)1223 346181

E: admissions@catseducation.com

www.catseducation.com

Brazil
+55 15 998 545454
brasil@ceg-uk.com

China
+86 10 5817 4060
china@ceg-uk.com

Hong Kong
+852 2882 4046
hongkong@ceg-uk.com

India
+91 9717774215
southasia@ceg-uk.com

Indonesia
+628111002488
indonesia@ceg-uk.com

Japan
japan@ceg-uk.com

Korea
+82 2 2052 1904
korea@ceg-uk.co.kr

Malaysia
+60 195 512812
malaysia@ceg-uk.com

Mexico
+52 1 81-1778 9091
latinamerica@ceg-uk.com

Nigeria
+2348188447504
nigeria@ceg-uk.com

Pakistan
+92 345 1444 455
pakistan@ceg-uk.com

Russia
+7 495 223 1348
russia@ceg-uk.ru

Singapore
+60 195 512812
singapore@ceg-uk.com

Taiwan
+886 978 711 878
taiwan@ceg-uk.com

Thailand
+ 66 981 891 565
thailand@ceg-uk.com

UK
+44 1223 345698
admissions@ceg-uk.com

USA
+1 617 610 8717
usa@ceg-uk.com

Vietnam
+8409 1484 9288



THE QUEEN'S AWARDS
FOR ENTERPRISE:
INTERNATIONAL TRADE
2014
TO CAMBRIDGE
EDUCATION GROUP